



**Equal Opportunity  
Commissioner**  
J. Masopust

**Data and Information  
Protection Officer**  
Dr. J. Lekschas

**Occupational Safety**  
K. Mätzke

**Social Counselling**  
Y. Janczak

**Quality Management\***  
Dr. J. Kleymann-Hilmes

**Export Control Commissioner\***  
B. Becker-Ziaja

\* Reports directly to the top management  
\*\* Chief Export Control Officer

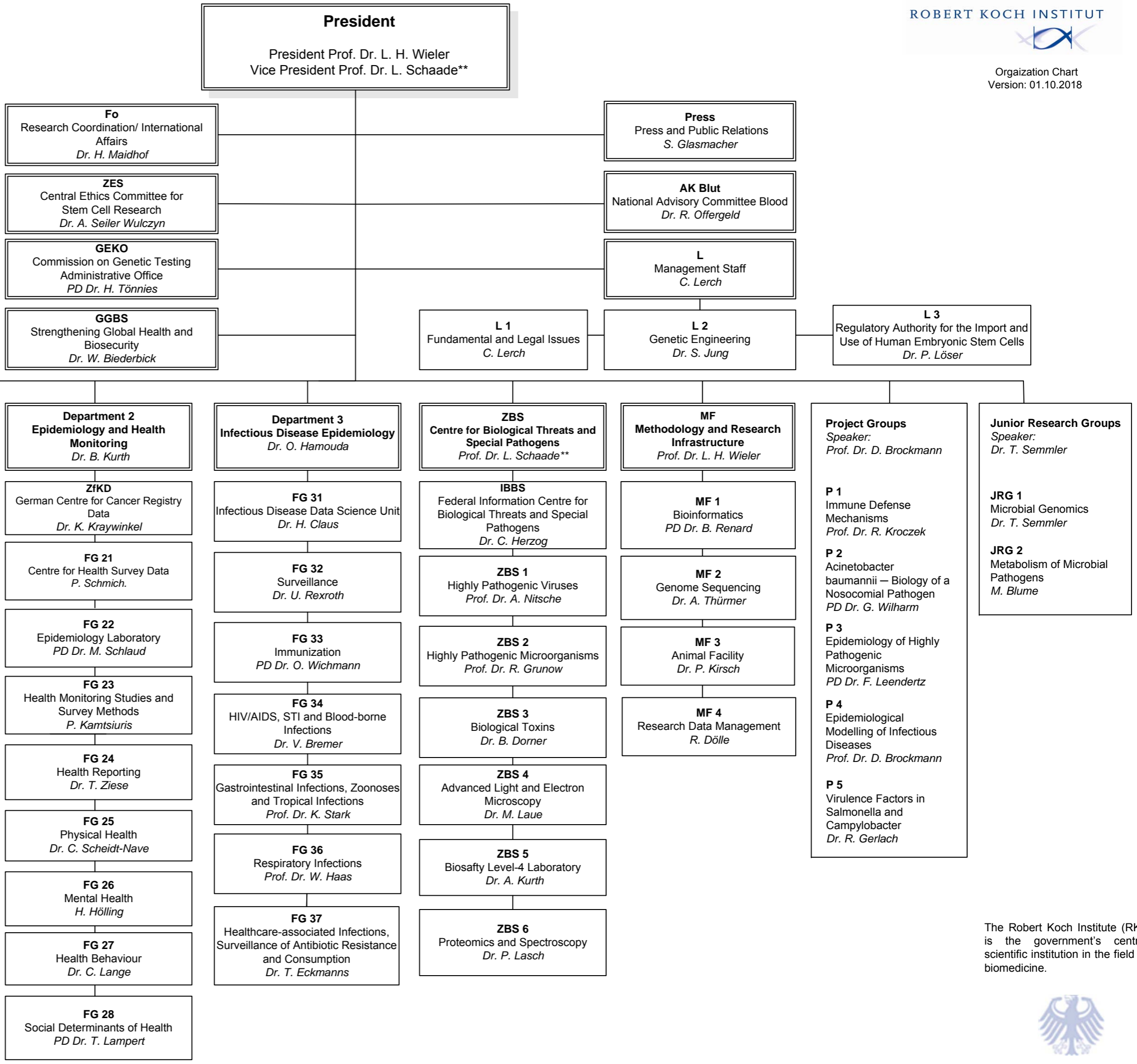
**Advisory Board**  
external

**Research Council**  
internal

**Staff Council**  
U. Schäfer

**Youth and Trainee  
Representative Council**  
F. Weltheroth

**Severely handicapped  
employee representative**  
C. Bug



The Robert Koch Institute (RKI) is the government's central scientific institution in the field of biomedicine.

