



# Coronavirus Disease 2019 (COVID-19)

## Daily Situation Report by the Robert Koch Institute

### 30/03/2023- CURRENT STATUS FOR GERMANY

Confirmed cases		7-day incidence (7-di)		DIVI-Intensive care registry as of 29/03/2023 12:15 AM	Vaccination monitoring as of 30/03/2023
Total <sup>1</sup>	active cases <sup>2</sup>	Total population	No. of districts with 7-di > 50/100,000 pop.	Change to previous day for no. of cases currently in ICU	No. of vaccinations reported in last 24h
+4,491 (38,347,963)	-3,200 [ca. 105,400]	29.6 cases/100,000 pop.	-14 [21/411]	-43 [1,080]	+3,379
Hospitalised <sup>1</sup>	Recovered <sup>3</sup>	Hospitalised (all age groups)	No. of districts with 7-di > 500/100,000 pop.	% of COVID-19 occupancy in total number of operable beds <sup>4</sup>	Total no. of people fully vaccinated against COVID-19 <sup>5, 6, 7</sup>
+1,270 (932,010)	+7,600 (ca. 38,071,800)	5.6 cases/100,000 pop.	±0 [0/411]	5.1 %	N1: 64,875,293 N2: 63,561,728 N3: 52,136,998
Deaths <sup>1</sup>	Hospitalised aged 60 years +	No. of districts with 7-di > 1000/100,000 pop	No. of new cases in ICU compared to the previous day	Share of population fully vaccinated against COVID-19	
+100 (170,727)	15.8 cases/100,000 pop.	±0 [0/411]	+113	N1: 77.9 % <sup>5</sup> N2: 76.4 % <sup>6</sup> N3: 62.6 % <sup>7</sup>	

Numbers in ( ) brackets show cumulative values, numbers in [ ] brackets show current values. Footnotes can be found in the Annex.

COVID-19 cases are notified to the local public health authorities in the respective districts, in accordance with the German Protection against Infection Act (IfSG). The data are further transmitted through the respective federal state health authority to the Robert Koch Institute (RKI). This situation report presents the uniformly recorded nationwide data on laboratory-confirmed COVID-19 cases transmitted to RKI.

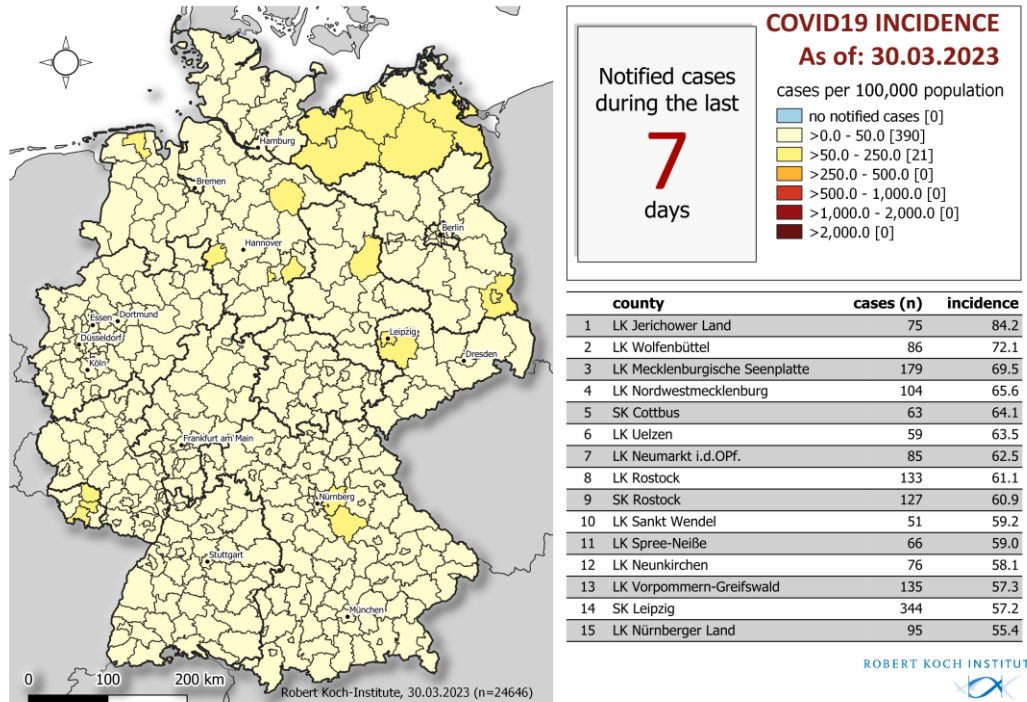
– Changes since the last report are marked *blue* in the text –

### Summary (as of 30/03/2023, 10:00 AM)

- Yesterday, **4,491** new laboratory-confirmed COVID-19 cases as well as **100** new deaths associated with COVID-19 were transmitted to the RKI in Germany. The national 7-day incidence is **29.6** cases per 100,000 population. The 7-day incidence in federal states lies between **55.6** cases per 100,000 population in **Mecklenburg- Western Pomerania** and **19** per 100,000 population in **Baden-Wuerttemberg**.
- Overall, **+1,270** new hospitalisations with COVID-19 were reported, the 7-day incidence of hospitalised cases is **5.6** per 100,000 population.
- On **29/03/2023** (12:15 AM), **1,080** COVID-19 patients were in intensive care units (ICU), **-43** cases compared to the day before. The COVID-19 adult occupancy as a percentage of all operational adult intensive care beds is **5.1 %**.<sup>4</sup>
- Since 26/12/2020, **192,197,713** vaccine doses have been administered in Germany. Overall, **77.9 %** of the population in Germany have been vaccinated at least once.<sup>5</sup> **76.4 %** have received a complete course of vaccination against COVID-19.<sup>6</sup> **62.6 %** have received a booster vaccination.<sup>7</sup>

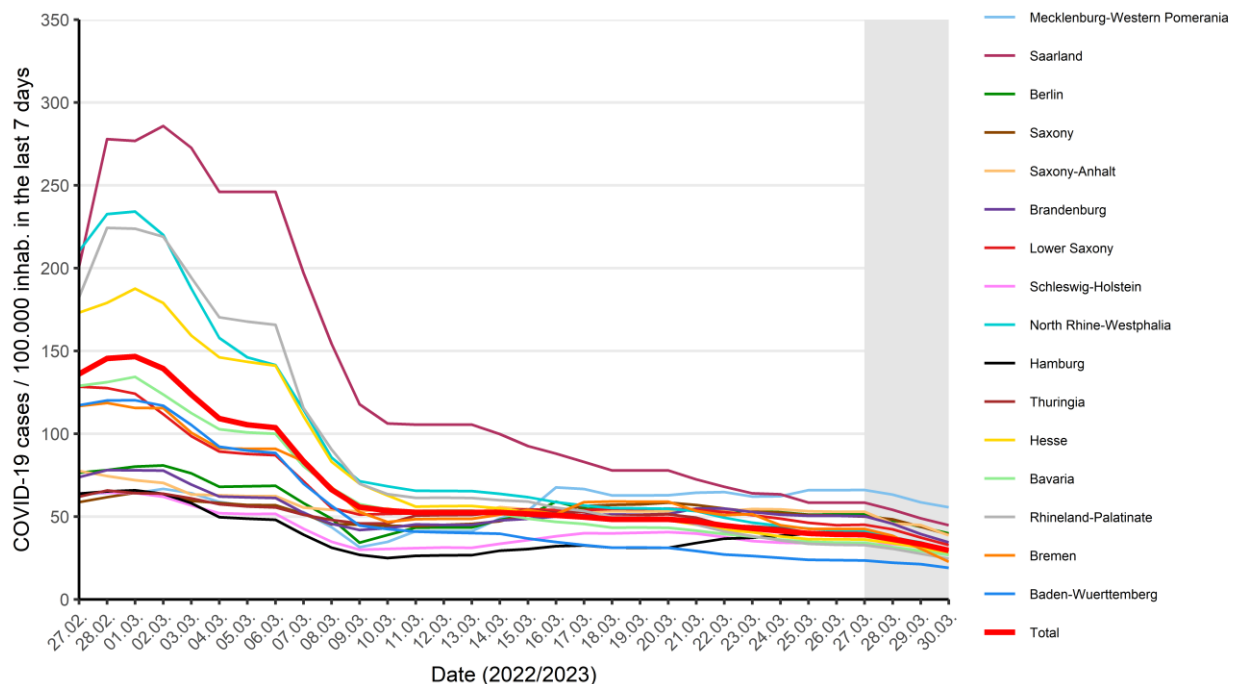
## Epidemiological Situation in Germany (as of 30/03/2023, 0:00 AM)

Since January 2020, a total of **38,347,963 (+4,491)** laboratory-confirmed cases of COVID-19 have been reported to and validated by the RKI (Table 1). The geographical distribution of cases of the last 7 days is shown in Figure 1. Please see the COVID-19 dashboard (<https://corona.rki.de/>) for information on the number of COVID-19 cases by county (local health authority).



**Figure 1: Number and cumulative incidence (per 100,000 population) of reported COVID-19 cases in Germany by county and federal state (n=24,646, 30/03/2023, 12:00 AM). Cases are usually reported according to the district from which they were transmitted. This usually corresponds to the place of residence. Place of residence and probable place of infection do not have to coincide.**

Figure 2 shows the course of the COVID-19 cases per 100,000 population transmitted to the RKI on the last 7 days in each of the federal states and in all of Germany. The values for the 7-day incidence in the federal states range from **55.6** per 100,000 population in **Mecklenburg- Western Pomerania** to **19** per 100,000 population in **Baden-Wuerttemberg**.



**Figure 2: COVID-19 cases/100,000 inhabitants during 7 days in Germany by federal state and reporting date in the health offices (30/03/2023, 0:00 AM). The grey area delineates a range of dates with yet incomplete data, where changes in incidence are likely to occur.**

**Table 1: Number and cumulative incidence (per 100,000 population) of laboratory-confirmed COVID-19 cases, hospitalizations and deaths for each federal state electronically reported to RKI, Germany (30/03/2023, 12:00 AM). The number of new cases includes cases newly notified to the local public health authority, but also on prior days.**

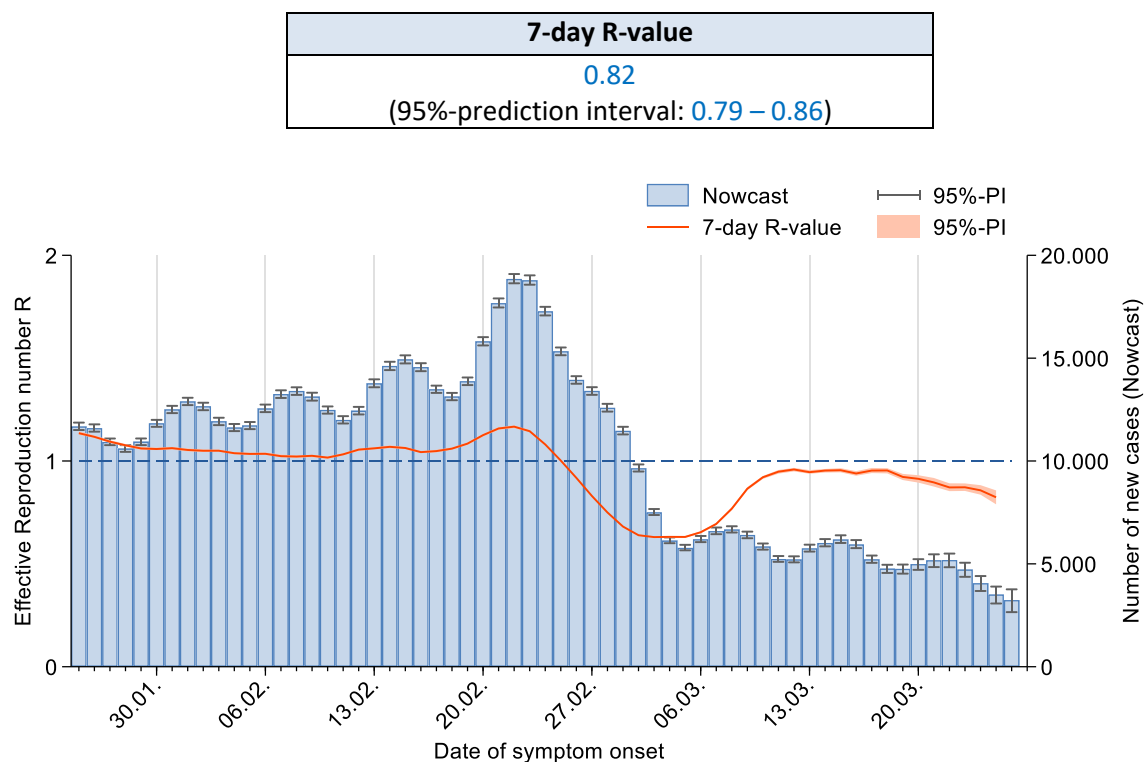
Federal State	Cumulative cases			Last 7 days			Cumulative deaths	
	Number of cases	Number of new cases	Cases/100,000 pop.	Cases	Cases/100,000 pop.	Hospitalisations/100,000 pop.	Number of deaths	Deaths/100,000 pop.
Baden-Wuerttemberg	5,072,323	351	45,595	2,117	19.0	2.13	19,472	175
Bavaria	6,755,149	692	51,265	3,531	26.8	6.53	28,985	220
Berlin	1,436,449	216	39,061	1,466	39.9	8.70	5,653	154
Brandenburg	1,117,381	145	44,028	875	34.5	8.98	6,548	258
Bremen	304,392	0	44,998	154	22.8	3.40	987	146
Hamburg	808,871	77	43,630	552	29.8	5.93	3,652	197
Hesse	2,935,490	289	46,632	1,717	27.3	5.10	12,570	200
Mecklenburg-Western Pomerania	714,379	154	44,339	896	55.6	13.90	2,795	173
Lower Saxony	3,871,338	489	48,229	2,631	32.8	4.27	13,912	173
North Rhine-Westphalia	8,072,230	1,087	45,034	5,349	29.8	5.36	31,841	178
Rhineland-Palatinate	1,774,654	177	43,216	1,011	24.6	5.55	7,065	172
Saarland	494,575	61	50,346	440	44.8	4.38	2,166	220
Saxony	1,961,591	370	48,518	1,579	39.1	6.36	16,887	418
Saxony-Anhalt	964,184	151	44,448	839	38.7	6.50	6,329	292
Schleswig-Holstein	1,178,484	142	40,331	872	29.8	6.26	3,517	120
Thuringia	886,473	90	42,036	617	29.3	10.05	8,348	396
<b>Total</b>	<b>38,347,963</b>	<b>4,491</b>	<b>46,071</b>	<b>24,646</b>	<b>29.6</b>	<b>5.64</b>	<b>170,727</b>	<b>205</b>

Quality checks and data cleaning by the local health departments and federal state health authorities can lead to corrections to cases previously transmitted (e. g. detection of duplicate reports). This can occasionally lead to negative values for the number of new cases.

The precision of the daily reporting of new infections is limited during the weekend and early in the week, because of a reduced level of testing, as well as of reporting and transmission of cases to the RKI (non-mandatory on weekends). Because there are no immediate consequences on the state and federal level, fewer health departments are transmitting data on weekends. Daily fluctuations in case numbers, especially on and just after weekends, should be interpreted with care. In terms of trends, the data are more reliable when comparing week to week. The RKI issues a more detailed weekly report each Thursday [in German].

### Estimation of the reproduction number (R), taking into account the reporting delay (Nowcasting)

Figure 3 shows the course of estimated 7-day R-value.



**Figure 3: Estimated 7-day R-value (in orange) over the last 60 days, against the background of estimated number of COVID-19 cases according to illness onset (as of 30/03/2023, 12 AM, taking into account cases up to 26/03/2023).**

Sample calculations as well as an excel sheet presenting the daily updated R-value can be retrieved under [www.rki.de/covid-19-nowcasting](http://www.rki.de/covid-19-nowcasting). A detailed description of the methodology is available at [https://www.rki.de/DE/Content/Infekt/EpidBull/Archiv/2020/17/Art\\_02.html](https://www.rki.de/DE/Content/Infekt/EpidBull/Archiv/2020/17/Art_02.html) (Epid. Bull. 17 | 2020 from 23/04/2020).

## Annex:

### Notes on data collection and evaluation

The data presented in this situation report represent a temporal snapshot. Information on individual cases can be obtained and added by the health authorities in the course of the disease. It is not possible to obtain complete data for all variables.

If necessary, the local public health authorities collect additional information, evaluate reported cases and initiate the necessary infection control measures. In accordance with the Infection Protection Act, the data are transmitted electronically by the local public health authorities to the federal state health authority and from there to the RKI on the next working day at the latest. The data is updated at the RKI daily at 0:00 AM.

Data entry and data transmission can lead to a time lag from the time the case is reported to the local public health authorities until publication by the RKI, so case numbers may deviate from those from other sources.

For the calculation of the incidences, the data of the population statistics of the Federal Statistical Office from 31.12.2021 are used. The calculation of the 7-day incidence is based on the reporting date, i.e. the date on which the local public health authorities became aware of the case and recorded it electronically. For the 7-day incidence, the cases reported on the last 7 days are counted.

On the other hand, the number of cases since the previous day, as shown in the situation report and dashboard, is tied to the date when the case is first published in the RKI's reporting. Thus, due to transmission delays, it may occur that cases with a reporting date more than 7 days ago are still included in the situation report. At the same time, the number of cases since the previous day also may contain cases that were subsequently deleted in data quality checks. Thus, the 7-day incidence cannot be readily calculated from these single-day incidences.

### Notes

- 1 The number of cases since the previous day refers to the date of receipt at the RKI; due to the delay in transmission, cases from previous days may be included.
- 2 The number of active cases results from the number of transmitted cases minus the deaths and the estimated number of recovered cases.
- 3 The algorithm for estimating the number of people who have recovered assumes an average duration of illness from onset or hospitalization date on. The true length of symptomatic illness and/or sequelae are usually not available in the reporting system.
- 4 Proportion of COVID-19 occupancy by adults out of all available adult intensive care beds.
- 5 The total number of persons vaccinated at least once results from the number of reports coded as first vaccination in the transmitted vaccination data.
- 6 According to specifications for vaccination data transmission, every second vaccination or first vaccination after recovery is to be transmitted with the code as a complete vaccination. A vaccination with the Janssen vaccine is coded and transmitted as a first vaccination, but is also counted as completed vaccination series.
- 7 The total number of persons with booster vaccination results from the number of reports coded as booster vaccination in the transmitted vaccination data.