



# Coronavirus Disease 2019 (COVID-19)

## Daily Situation Report by the Robert Koch Institute

### 24/03/2023- CURRENT STATUS FOR GERMANY

Confirmed cases		7-day incidence (7-di)		DIVI-Intensive care registry as of 23/03/2023 12:15 AM	Vaccination monitoring as of 24/03/2023
Total <sup>1</sup>	active cases <sup>2</sup>	Total population	No. of districts with 7-di > 50/100,000 pop.	Change to previous day for no. of cases currently in ICU	No. of vaccinations reported in last 24h
+5,635 (38,326,616)	-8,000 [ca. 144,400]	39.0 cases/100,000 pop.	-11 [90/411]	-15 [1,223]	+3,627
Hospitalised <sup>1</sup>	Recovered <sup>3</sup>	Hospitalised (all age groups)	No. of districts with 7-di > 500/100,000 pop.	% of COVID-19 occupancy in total number of operable beds <sup>4</sup>	Total no. of people fully vaccinated against COVID-19 <sup>5, 6, 7</sup>
+1,321 (926,256)	+13,500 (ca. 38,012,000)	7.0 cases/100,000 pop.	±0 [0/411]	5.8 %	N1: 64,874,850 N2: 63,561,103 N3: 52,135,583
Deaths <sup>1</sup>	Hospitalised aged 60 years +	No. of districts with 7-di > 1000/100,000 pop	No. of new cases in ICU compared to the previous day	Share of population fully vaccinated against COVID-19	
+157 (170,231)	19.3 cases/100,000 pop.	±0 [0/411]	+143	N1: 77.9 % <sup>5</sup> N2: 76.4 % <sup>6</sup> N3: 62.6 % <sup>7</sup>	

Numbers in () brackets show cumulative values, numbers in [] brackets show current values. Footnotes can be found in the Annex.

COVID-19 cases are notified to the local public health authorities in the respective districts, in accordance with the German Protection against Infection Act (IfSG). The data are further transmitted through the respective federal state health authority to the Robert Koch Institute (RKI). This situation report presents the uniformly recorded nationwide data on laboratory-confirmed COVID-19 cases transmitted to RKI.

– Changes since the last report are marked blue in the text –

### Summary (as of 24/03/2023, 10:00 AM)

- Yesterday, 5,635 new laboratory-confirmed COVID-19 cases as well as 157 new deaths associated with COVID-19 were transmitted to the RKI in Germany. The national 7-day incidence is 39.0 cases per 100,000 population. The 7-day incidence in federal states lies between 63.5 cases per 100,000 population in Saarland and 24 per 100,000 population in Baden-Wuerttemberg.
- Overall, +1,321 new hospitalisations with COVID-19 were reported, the 7-day incidence of hospitalised cases is 7.0 per 100,000 population.
- On 23/03/2023 (12:15 AM), 1,223 COVID-19 patients were in intensive care units (ICU), -15 cases compared to the day before. The COVID-19 adult occupancy as a percentage of all operational adult intensive care beds is 5.8 %.<sup>4</sup>
- Since 26/12/2020, 192,183,711 vaccine doses have been administered in Germany. Overall, 77.9 % of the population in Germany have been vaccinated at least once.<sup>5</sup> 76.4 % have received a complete course of vaccination against COVID-19.<sup>6</sup> 62.6 % have received a booster vaccination.<sup>7</sup>

## Epidemiological Situation in Germany (as of 24/03/2023, 0:00 AM)

Since January 2020, a total of **38,326,616 (+5,635)** laboratory-confirmed cases of COVID-19 have been reported to and validated by the RKI (Table 1). The geographical distribution of cases of the last 7 days is shown in Figure 1. Please see the COVID-19 dashboard (<https://corona.rki.de/>) for information on the number of COVID-19 cases by county (local health authority).

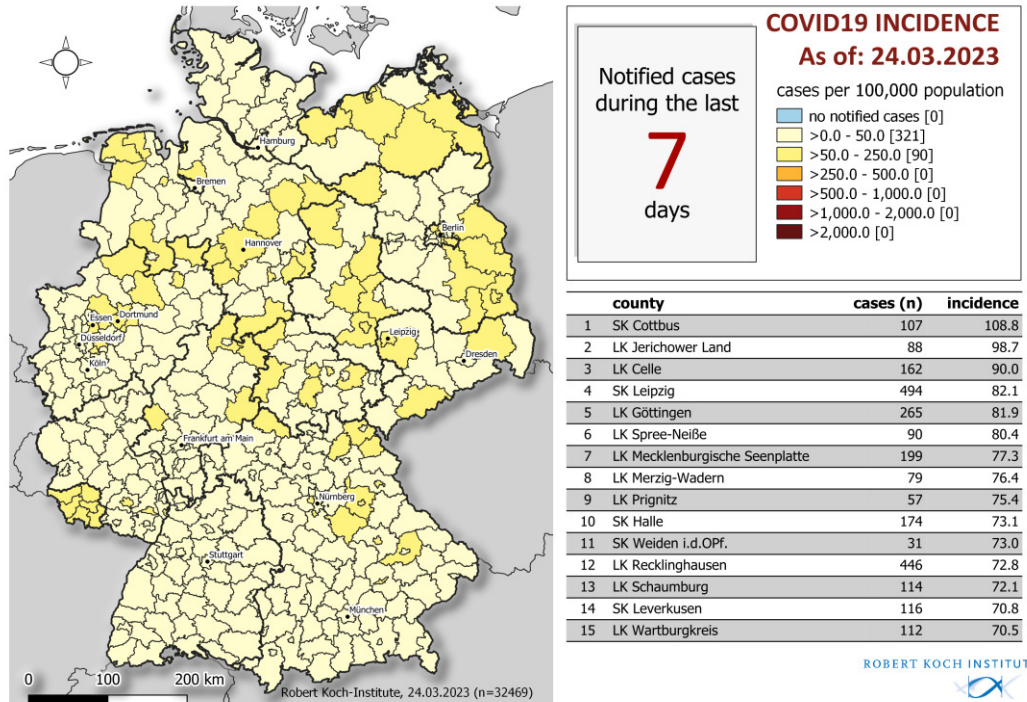


Figure 1: Number and cumulative incidence (per 100,000 population) of reported COVID-19 cases in Germany by county and federal state (n=32,469, 24/03/2023, 12:00 AM). Cases are usually reported according to the district from which they were transmitted. This usually corresponds to the place of residence. Place of residence and probable place of infection do not have to coincide.

Figure 2 shows the course of the COVID-19 cases per 100,000 population transmitted to the RKI on the last 7 days in each of the federal states and in all of Germany. The values for the 7-day incidence in the federal states range from **63.5** per 100,000 population in **Saarland** to **24** per 100,000 population in **Baden-Wuerttemberg**.

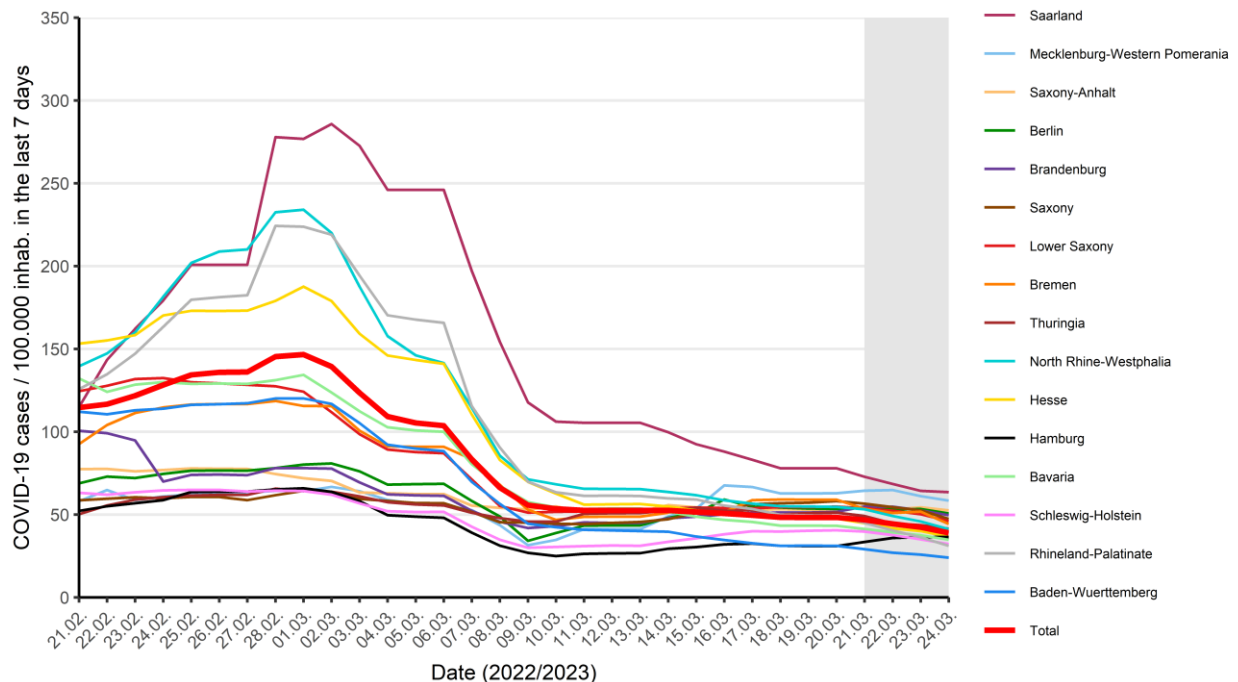


Figure 2: COVID-19 cases/100,000 inhabitants during 7 days in Germany by federal state and reporting date in the health offices (24/03/2023, 0:00 AM). The grey area delineates a range of dates with yet incomplete data, where changes in incidence are likely to occur.

**Table 1: Number and cumulative incidence (per 100,000 population) of laboratory-confirmed COVID-19 cases, hospitalizations and deaths for each federal state electronically reported to RKI, Germany (24/03/2023, 12:00 AM). The number of new cases includes cases newly notified to the local public health authority, but also on prior days.**

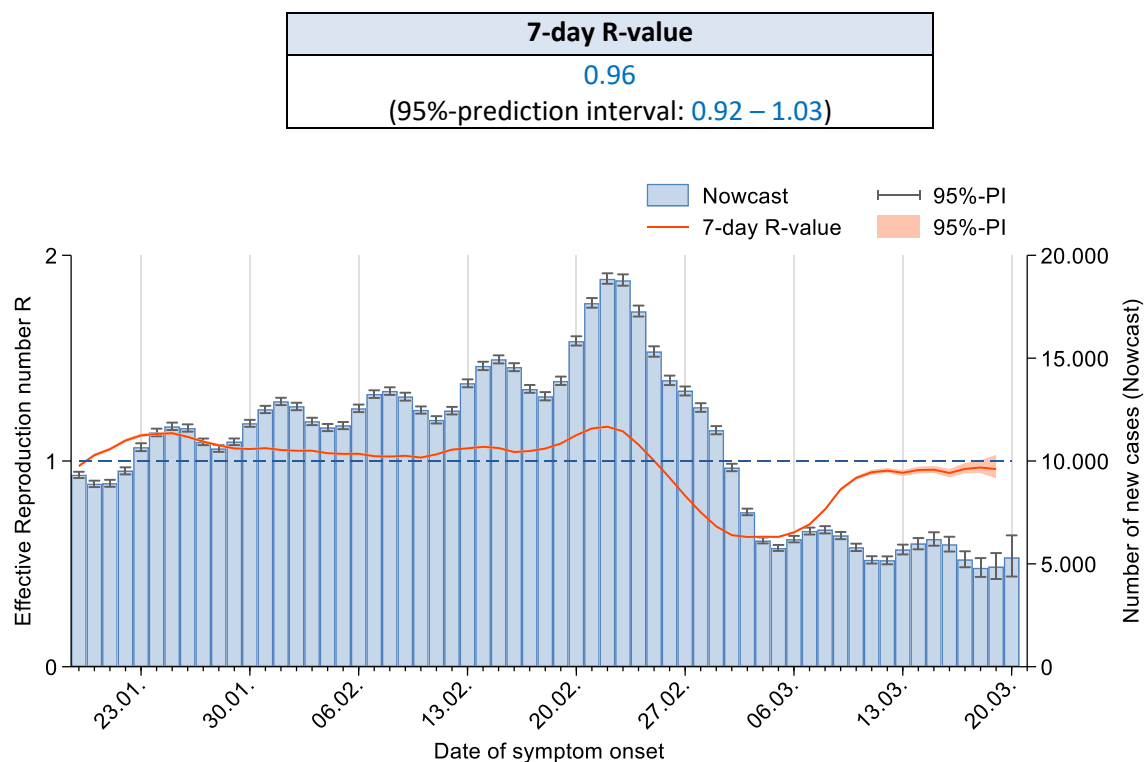
Federal State	Cumulative cases			Last 7 days			Cumulative deaths	
	Number of cases	Number of new cases	Cases/100,000 pop.	Cases	Cases/100,000 pop.	Hospitalisations/100,000 pop.	Number of deaths	Deaths/100,000 pop.
Baden-Wuerttemberg	5,070,502	422	45,579	2,670	24.0	2.78	19,445	175
Bavaria	6,752,200	733	51,242	4,594	34.9	7.96	28,918	219
Berlin	1,435,282	304	39,029	1,864	50.7	11.20	5,618	153
Brandenburg	1,116,642	179	43,999	1,260	49.6	10.91	6,529	257
Bremen	304,327	20	44,988	300	44.3	5.32	984	145
Hamburg	808,387	121	43,604	676	36.5	6.10	3,645	197
Hesse	2,934,089	291	46,610	2,305	36.6	6.20	12,527	199
Mecklenburg-Western Pomerania	713,589	175	44,290	941	58.4	12.72	2,780	173
Lower Saxony	3,868,985	590	48,199	3,699	46.1	5.32	13,867	173
North Rhine-Westphalia	8,067,370	1,591	45,007	7,384	41.2	7.22	31,718	177
Rhineland-Palatinate	1,773,688	201	43,192	1,281	31.2	6.43	7,027	171
Saarland	494,246	109	50,313	624	63.5	9.16	2,155	219
Saxony	1,960,170	341	48,483	1,915	47.4	7.27	16,872	417
Saxony-Anhalt	963,486	197	44,416	1,140	52.6	10.14	6,312	291
Schleswig-Holstein	1,177,687	206	40,304	941	32.2	5.24	3,503	120
Thuringia	885,966	155	42,012	875	41.5	13.09	8,331	395
<b>Total</b>	<b>38,326,616</b>	<b>5,635</b>	<b>46,045</b>	<b>32,469</b>	<b>39.0</b>	<b>6.98</b>	<b>170,231</b>	<b>205</b>

Quality checks and data cleaning by the local health departments and federal state health authorities can lead to corrections to cases previously transmitted (e. g. detection of duplicate reports). This can occasionally lead to negative values for the number of new cases.

The precision of the daily reporting of new infections is limited during the weekend and early in the week, because of a reduced level of testing, as well as of reporting and transmission of cases to the RKI (non-mandatory on weekends). Because there are no immediate consequences on the state and federal level, fewer health departments are transmitting data on weekends. Daily fluctuations in case numbers, especially on and just after weekends, should be interpreted with care. In terms of trends, the data are more reliable when comparing week to week. The RKI issues a more detailed weekly report each Thursday [in German].

### Estimation of the reproduction number (R), taking into account the reporting delay (Nowcasting)

Figure 3 shows the course of estimated 7-day R-value.



**Figure 3: Estimated 7-day R-value (in orange) over the last 60 days, against the background of estimated number of COVID-19 cases according to illness onset (as of 24/03/2023, 12 AM, taking into account cases up to 20/03/2023).**

Sample calculations as well as an excel sheet presenting the daily updated R-value can be retrieved under [www.rki.de/covid-19-nowcasting](http://www.rki.de/covid-19-nowcasting). A detailed description of the methodology is available at [https://www.rki.de/DE/Content/Infekt/EpidBull/Archiv/2020/17/Art\\_02.html](https://www.rki.de/DE/Content/Infekt/EpidBull/Archiv/2020/17/Art_02.html) (Epid. Bull. 17 | 2020 from 23/04/2020).

## Annex:

### Notes on data collection and evaluation

The data presented in this situation report represent a temporal snapshot. Information on individual cases can be obtained and added by the health authorities in the course of the disease. It is not possible to obtain complete data for all variables.

If necessary, the local public health authorities collect additional information, evaluate reported cases and initiate the necessary infection control measures. In accordance with the Infection Protection Act, the data are transmitted electronically by the local public health authorities to the federal state health authority and from there to the RKI on the next working day at the latest. The data is updated at the RKI daily at 0:00 AM.

Data entry and data transmission can lead to a time lag from the time the case is reported to the local public health authorities until publication by the RKI, so case numbers may deviate from those from other sources.

For the calculation of the incidences, the data of the population statistics of the Federal Statistical Office from 31.12.2021 are used. The calculation of the 7-day incidence is based on the reporting date, i.e. the date on which the local public health authorities became aware of the case and recorded it electronically. For the 7-day incidence, the cases reported on the last 7 days are counted.

On the other hand, the number of cases since the previous day, as shown in the situation report and dashboard, is tied to the date when the case is first published in the RKI's reporting. Thus, due to transmission delays, it may occur that cases with a reporting date more than 7 days ago are still included in the situation report. At the same time, the number of cases since the previous day also may contain cases that were subsequently deleted in data quality checks. Thus, the 7-day incidence cannot be readily calculated from these single-day incidences.

### Notes

- 1 The number of cases since the previous day refers to the date of receipt at the RKI; due to the delay in transmission, cases from previous days may be included.
- 2 The number of active cases results from the number of transmitted cases minus the deaths and the estimated number of recovered cases.
- 3 The algorithm for estimating the number of people who have recovered assumes an average duration of illness from onset or hospitalization date on. The true length of symptomatic illness and/or sequelae are usually not available in the reporting system.
- 4 Proportion of COVID-19 occupancy by adults out of all available adult intensive care beds.
- 5 The total number of persons vaccinated at least once results from the number of reports coded as first vaccination in the transmitted vaccination data.
- 6 According to specifications for vaccination data transmission, every second vaccination or first vaccination after recovery is to be transmitted with the code as a complete vaccination. A vaccination with the Janssen vaccine is coded and transmitted as a first vaccination, but is also counted as completed vaccination series.
- 7 The total number of persons with booster vaccination results from the number of reports coded as booster vaccination in the transmitted vaccination data.