



Coronavirus Disease 2019 (COVID-19)

Daily Situation Report by the Robert Koch Institute

11/02/2022- CURRENT STATUS FOR GERMANY

Confirmed cases		7-day incidence (7-di)		DIVI-Intensive care registry as of 10/02/2022 12:15 AM	Vaccination monitoring as of 11/02/2022
Total ¹	active cases ²	Total population	No. of districts with 7-di > 50/100,000 pop.	Change to previous day for no. of cases currently in ICU	No. of vaccinations reported in last 24h
+240,172	+129,800	1,472.2	±0	-2	1st vaccination: +17,401
(12,009,712)	[ca. 3,292,800]	cases/100,000 pop.	[411/411]	[2,396]	2nd vaccination: +53,187
					Booster vaccination: +160,640
Hospitalised ¹	Recovered ³	Hospitalised (all age groups)	No. of districts with 7-di > 500/100,000 pop.	% of COVID-19 occupancy in total number of operable beds ⁴	Total no. of people fully vaccinated against COVID-19 ^{5, 6, 7}
+1,759	+110,100	6.46	+2	10.6 %	N1: 63,257,882
(421,722)	(ca. 8,597,300)	cases/100,000 pop.	[411/411]		N2: 62,126,805
					N3: 45,888,382
Deaths ¹	Hospitalised aged 60 years +	No. of districts with 7-di > 1000/100,000 pop	No. of new cases in ICU compared to the previous day	Share of population fully vaccinated against COVID-19	
+226	12.06	+8	+254	N1: 76.1 % ⁵	
(119,679)	cases/100,000 pop.	[342/411]		N2: 74.7 % ⁶	
				N3: 55.2 % ⁷	

Numbers in () brackets show cumulative values, numbers in [] brackets show current values. Footnotes can be found in the Annex.

COVID-19 cases are notified to the local public health authorities in the respective districts, in accordance with the German Protection against Infection Act (IfSG). The data are further transmitted through the respective federal state health authority to the Robert Koch Institute (RKI). This situation report presents the uniformly recorded nationwide data on laboratory-confirmed COVID-19 cases transmitted to RKI.

– Changes since the last report are marked **blue** in the text –

Summary (as of 11/02/2022, 10:00 AM)

- Yesterday, **240,172** new laboratory-confirmed COVID-19 cases as well as **226** new deaths associated with COVID-19 were transmitted to the RKI in Germany. The national 7-day incidence is **1,472.2** cases per 100,000 population. The 7-day incidence in federal states lies between **1,811.4** cases per 100,000 population in **Bavaria** and **824.3** per 100,000 population in **Schleswig-Holstein**.
- Overall, **+1,759** new hospitalisations with COVID-19 were reported, the 7-day incidence of hospitalised cases is **6.46** per 100,000 population.
- On **10/02/2022** (12:15 AM), **2,396** COVID-19 patients were in intensive care units (ICU), **-2** cases compared to the day before. The COVID-19 adult occupancy as a percentage of all operational adult intensive care beds is **10.6 %**.⁴
- Since 26/12/2020, **167,669,662** vaccine doses have been administered in Germany. Overall, **76.1 %** of the population in Germany have been vaccinated at least once.⁵ **74.7 %** have received a complete course of vaccination against COVID-19. **55.2 %** have received a booster vaccination.⁷

Epidemiological Situation in Germany (as of 11/02/2022, 0:00 AM)

Since January 2020, a total of **12,009,712 (+240,172)** laboratory-confirmed cases of COVID-19 have been reported to and validated by the RKI (Table 1). The geographical distribution of cases of the last 7 days is shown in Figure 1. Please see the COVID-19 dashboard (<https://corona.rki.de/>) for information on the number of COVID-19 cases by county (local health authority).

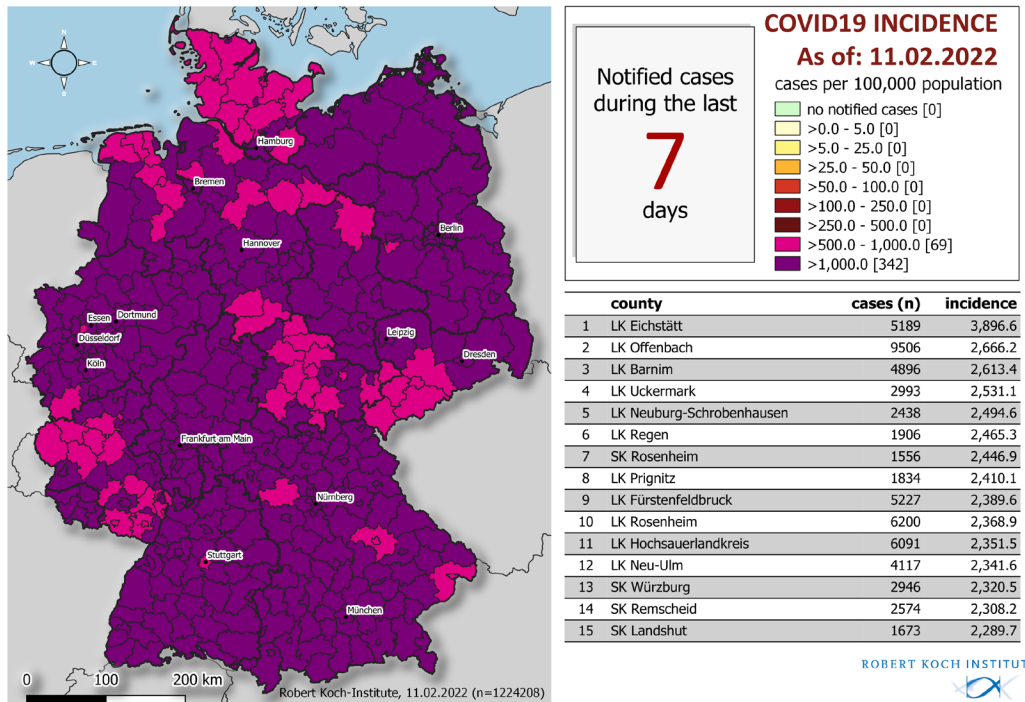


Figure 1: Number and cumulative incidence (per 100,000 population) of reported COVID-19 cases in Germany by county and federal state (n=1,224,208, 11/02/2022, 12:00 AM). Cases are usually reported according to the district from which they were transmitted. This usually corresponds to the place of residence. Place of residence and probable place of infection do not have to coincide.

Table 1: Number and cumulative incidence (per 100,000 population) of laboratory-confirmed COVID-19 cases, hospitalizations and deaths for each federal state electronically reported to RKI, Germany (11/02/2022, 12:00 AM). The number of new cases includes cases newly notified to the local public health authority, but also on prior days.

Federal State	Cumulative cases			Last 7 days			Cumulative deaths	
	Number of cases	Number of new cases	Cases/100,000 pop.	Cases	Cases/100,000 pop.	Hospitalisations/100,000 pop.	Number of deaths	Deaths/100,000 pop.
Baden-Wuerttemberg	1,657,536	36,640	14,929	173,709	1,564.5	7.61	13,875	125
Bavaria	2,192,235	45,869	16,683	238,018	1,811.4	6.03	20,802	158
Berlin	639,573	10,164	17,455	51,803	1,413.8	4.12	4,164	114
Brandenburg	419,304	9,941	16,566	45,165	1,784.4	5.33	5,075	201
Bremen	101,574	1,340	14,934	8,867	1,303.7	4.12	662	97
Hamburg	304,233	5,145	16,423	22,333	1,205.6	4.32	2,201	119
Hesse	891,495	19,973	14,166	104,984	1,668.2	7.13	8,955	142
Mecklenburg-Western Pomerania	183,068	3,756	11,365	22,664	1,407.0	15.21	1,686	105
Lower Saxony	815,363	18,884	10,188	97,679	1,220.5	4.59	7,202	90
North Rhine-Westphalia	2,475,864	51,676	13,812	274,752	1,532.7	6.79	21,456	120
Rhineland-Palatinate	467,219	9,343	11,400	46,934	1,145.2	6.32	4,859	119
Saarland	127,278	2,556	12,935	15,145	1,539.1	4.17	1,351	137
Saxony	803,439	8,695	19,804	45,828	1,129.6	5.05	14,204	350
Saxony-Anhalt	317,709	7,708	14,569	32,357	1,483.8	7.93	4,663	214
Schleswig-Holstein	262,969	4,106	9,034	23,993	824.3	6.05	2,029	70
Thuringia	350,853	4,376	16,548	19,977	942.2	10.00	6,495	306
Total	12,009,712	240,172	14,443	1,224,208	1,472.2	6.46	119,679	144

Quality checks and data cleaning by the local health departments and federal state health authorities can lead to corrections to cases previously transmitted (e. g. detection of duplicate reports). This can occasionally lead to negative values for the number of new cases.

Figure 2 shows the course of the COVID-19 cases per 100,000 population transmitted to the RKI on the last 7 days in each of the federal states and in all of Germany. The values for the 7-day incidence in the federal states range from 1,811.4 per 100,000 population in Bavaria to 824.3 per 100,000 population in Schleswig-Holstein.

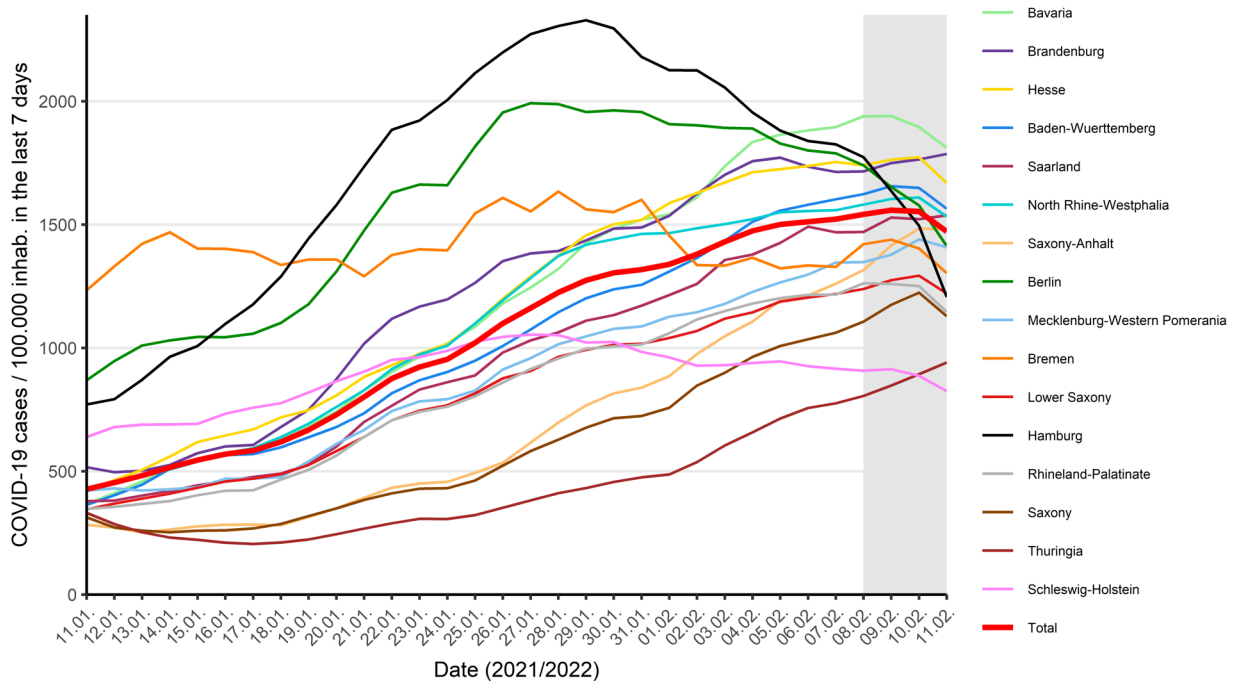


Figure 2: COVID-19 cases/100,000 inhabitants during 7 days in Germany by federal state and reporting date in the health offices (11/02/2022, 0:00 AM). The grey area delineates a range of dates with yet incomplete data, where changes in incidence are likely to occur.

Estimation of the reproduction number (R), taking into account the reporting delay (Nowcasting)

Figure 3 shows the course of estimated 7-day R-value.

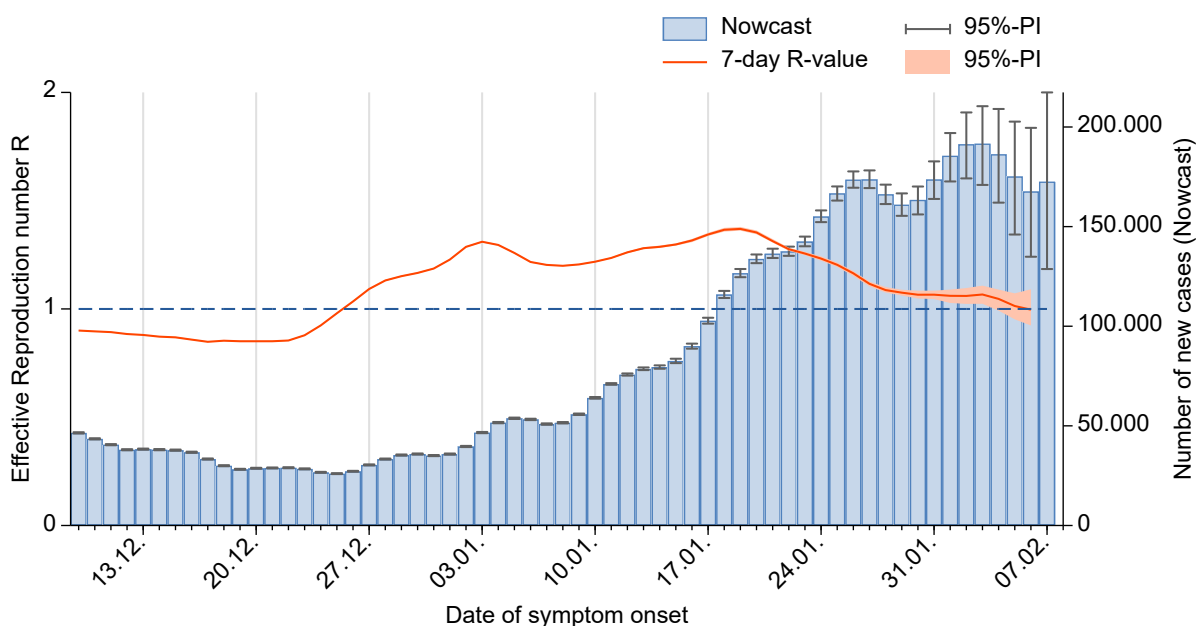
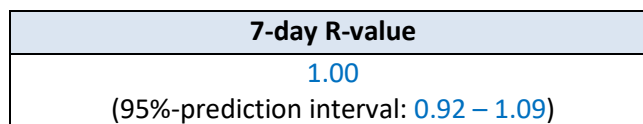


Figure 3: Estimated 7-day R-value (in orange) over the last 60 days, against the background of estimated number of COVID-19 cases according to illness onset (as of 11/02/2022, 12 AM, taking into account cases up to 07/02/2022).

The current reduction in the value of R denotes diminishing increases in case numbers. It should be noted that many aspects - e.g. the documentation of cases including information on date of onset in the health departments - influence the calculation of R, and may result in point estimates below 1 on individual days. Only a continuous R significantly below 1 over a number of days indicates decreasing case numbers.

Sample calculations as well as an excel sheet presenting the daily updated R-value can be retrieved under www.rki.de/covid-19-nowcasting. A detailed description of the methodology is available at https://www.rki.de/DE/Content/Infekt/EpidBull/Archiv/2020/17/Art_02.html (Epid. Bull. 17 | 2020 from 23/04/2020).

Annex:

Notes on data collection and evaluation

The data presented in this situation report represent a temporal snapshot. Information on individual cases can be obtained and added by the health authorities in the course of the disease. It is not possible to obtain complete data for all variables.

If necessary, the local public health authorities collect additional information, evaluate reported cases and initiate the necessary infection control measures. In accordance with the Infection Protection Act, the data are transmitted electronically by the local public health authorities to the federal state health authority and from there to the RKI on the next working day at the latest. The data is updated at the RKI daily at 0:00 AM.

Data entry and data transmission can lead to a time lag from the time the case is reported to the local public health authorities until publication by the RKI, so case numbers may deviate from those from other sources.

For the calculation of the incidences, the data of the population statistics of the Federal Statistical Office from 31.12.2020 are used. The calculation of the 7-day incidence is based on the reporting date, i.e. the date on which the local public health authorities became aware of the case and recorded it electronically. For the 7-day incidence, the cases reported on the last 7 days are counted.

On the other hand, the number of cases since the previous day, as shown in the situation report and dashboard, is tied to the date when the case is first published in the RKI's reporting. Thus, due to transmission delays, it may occur that cases with a reporting date more than 7 days ago are still included in the situation report. At the same time, the number of cases since the previous day also may contain cases that were subsequently deleted in data quality checks. Thus, the 7-day incidence cannot be readily calculated from these single-day incidences.

Notes

- 1 The number of cases since the previous day refers to the date of receipt at the RKI; due to the delay in transmission, cases from previous days may be included.
- 2 The number of active cases results from the number of transmitted cases minus the deaths and the estimated number of recovered cases.
- 3 The algorithm for estimating the number of people who have recovered assumes an average duration of illness from onset or hospitalization date on. The true length of symptomatic illness and/or sequelae are usually not available in the reporting system.
- 4 Proportion of COVID-19 occupancy by adults out of all available adult intensive care beds.
- 5 The total number of persons vaccinated at least once results from the number of reports coded as first vaccination in the transmitted vaccination data.
- 6 According to specifications for vaccination data transmission, every second vaccination or first vaccination after recovery is to be transmitted with the code as a complete vaccination. A vaccination with the Janssen vaccine is coded and transmitted as a first vaccination, but is also counted as completed vaccination series.
- 7 The total number of persons with booster vaccination results from the number of reports coded as booster vaccination in the transmitted vaccination data.