



Coronavirus Disease 2019 (COVID-19) Daily Situation Report of the Robert Koch Institute

05/08/2020 - UPDATED STATUS FOR GERMANY (CORRECTED VERSION)

Confirmed cases	Deaths	Deaths (%)	Recovered
212,022 (+ 741*)	9,168 (+12*)	4.3%	ca. 194,600**

*Change compared to previous day; **Estimate

COVID-19 cases are notified to the local public health department in the respective districts, in accordance with the German Protection against Infection Act (IfSG). The data are further transmitted through the respective federal state health authority to the Robert Koch Institute (RKI). This situation report presents the uniformly recorded nationwide data on laboratory-confirmed COVID-19 cases transmitted to RKI.

– Changes since the last report are marked *blue* in the text –

Summary (as of 05/08/2020 12:00 AM)

- In the past few weeks, the number of districts reporting zero COVID-19 cases over a period of 7 days has decreased markedly. In parallel, the COVID-19 incidence has risen in many federal states. This trend is concerning.
- The cumulative nationwide incidence over the past 7 days was 5.6 cases per 100,000 inhabitants and thus further increased slightly, albeit at a low level. A total of **68** districts transmitted zero cases over the past 7 days. In a further **212** districts the 7-day-incidence is below 5.0/100,000 inhabitants.
- In total, **212,022** laboratory-confirmed COVID-19 cases and **9,168** deaths due to COVID-19 have been electronically reported to the RKI in Germany.
- In the Bavarian district of Dingolfing-Landau a COVID-19 related outbreak occurred with **>390** cases among harvest workers of an agricultural company and among employees of a canning company.
- Moreover, further COVID-19-related outbreaks are being reported in various settings, including nursing homes and hospitals, facilities for asylum-seekers and refugees, as well as in the context of religious or family events.

Note: The report is a snapshot and is continuously updated.

Epidemiological Situation in Germany

General current assessment

An increase in the daily number of reported COVID-19 cases occurred over the past 2 weeks in many of the federal states.

Nationwide, there are many smaller case outbreaks in different administrative districts in various settings, such as larger family events, leisure activities, occupational settings, but also in community and health facilities. In addition, COVID-19 cases are increasingly being identified among people returning from travel abroad.

The number of new cases reported daily has been increasing over the past two weeks. This development is very concerning and will continue to be monitored very closely by the RKI. A further worsening of the situation must be avoided. This will only succeed if the entire population continues to be committed to decreasing transmission, e.g. by consistently observing rules of physical distancing and hygiene - also in outdoor settings -, by airing indoor areas and, where indicated, wearing a community or face mask correctly.

Geographical distribution of cases

Epidemiological analyses are based on validated cases notified electronically to the RKI in line with the Protection Against Infection Law (Data closure: 12:00 AM daily). Since January 2020, a total of **212,022 (+741)** laboratory-confirmed cases of COVID-19 have been electronically reported to and validated by the RKI (see **Table 1**). A total of **68** districts reported no cases in the past 7 days. In the past few weeks, the number of districts not transmitting any COVID-19 cases over a period of 7 days decreased continuously, from a maximum of 125 districts on 12/07/2020.

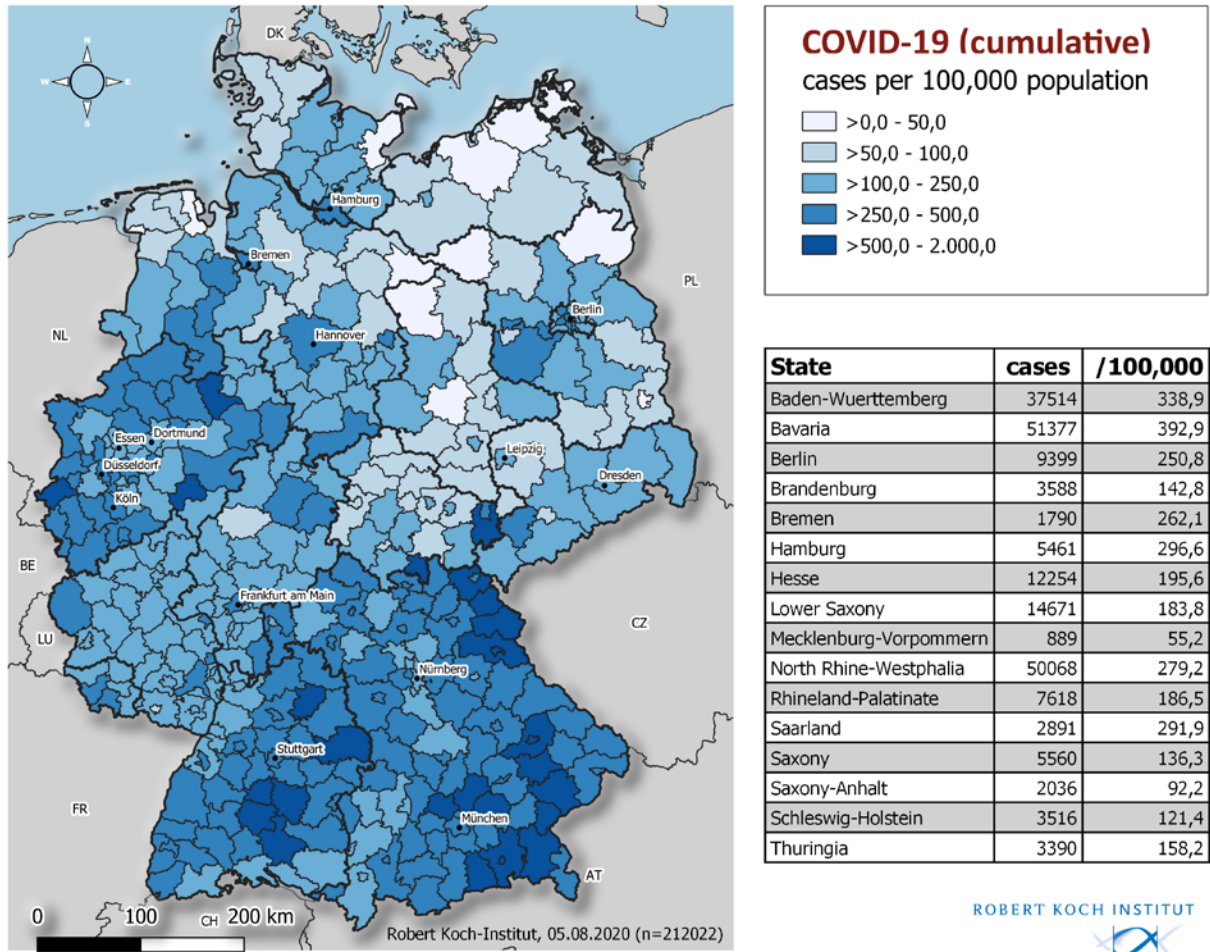


Figure 1: Number and cumulative incidence (per 100,000 population) of the 212,022 electronically reported COVID-19 cases in Germany by county and federal state (05/08/2020, 00:00 AM). Please see the COVID-19 dashboard (<https://corona.rki.de/>) for information on number of COVID-19 cases by county (local health authority).

Note: The report is a snapshot and is continuously updated.

Table 1: Number and cumulative incidence (per 100,000 population) of laboratory-confirmed COVID-19 cases and deaths for each federal state electronically reported to RKI, Germany (05/08/2020, 12:00 AM). The number of new cases covers positive cases, which have been sent to the local health department at the same day, but also at previous days.

Federal State	Total number of cases	Number of new cases	Cases/ 100,000 pop.	Cases in the last 7 days	7-day incidence per 100,000 pop.	Number of deaths	Number of deaths/ 100,000 pop.
Baden-Wuerttemberg	37,514	59	339	402	3.6	1,847	16.7
Bavaria	51,377	98	393	631	4.8	2,624	20.1
Berlin	9,399	32	251	289	7.7	223	5.9
Brandenburg	3,588	9	143	28	1.1	168	6.7
Bremen	1,790	3	262	32	4.7	56	8.2
Hamburg	5,461	17	297	105	5.7	261	14.2
Hesse	12,254	55	196	425	6.8	523	8.3
Mecklenburg-Western Pomerania	889	9	55	37	2.3	20	1.2
Lower Saxony	14,671	37	184	296	3.7	654	8.2
North Rhine-Westphalia	50,068	341	279	1,990	11.1	1,751	9.8
Rhineland-Palatinate	7,618	35	186	141	3.5	239	5.9
Saarland	2,891	5	292	29	2.9	174	17.6
Saxony	5,560	12	136	30	0.7	225	5.5
Saxony-Anhalt	2,036	2	92	33	1.5	64	2.9
Schleswig-Holstein	3,516	22	121	139	4.8	157	5.4
Thuringia	3,390	5	158	32	1.5	182	8.5
Total	212,022	741	255	4,639	5.6	9,168	11.0

As part of quality checks and data cleaning by the health authorities and regional offices, corrections to cases previously transmitted (e.g. detection of duplicate reports) can occasionally lead to negative values for the number of new cases.

Distribution of cases over time

The first COVID-19 cases in Germany were notified in January 2020. Figure 2 shows COVID-19 cases transmitted to RKI according to date of illness onset from 01/03/2020 onwards. Of these cases, the onset of symptoms is unknown in 66,336 cases (31%), thus their date of reporting is provided in Figure 2.

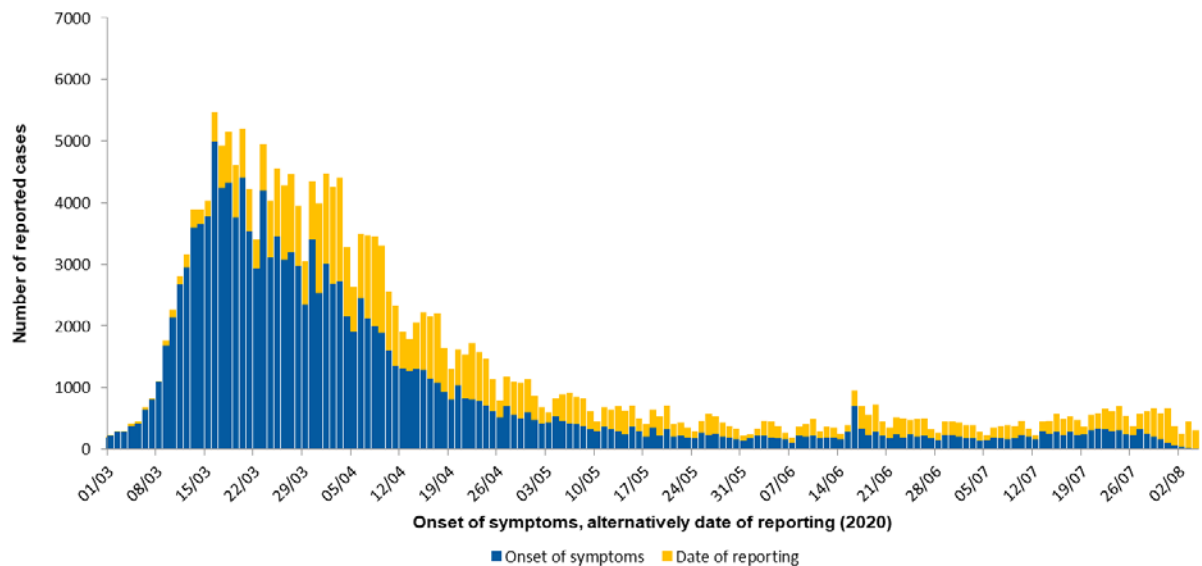


Figure 2: Number of Covid-19 cases in Germany electronically reported to the RKI by the date of symptoms onset or –if unknown- alternatively by date of reporting from 01/03/2020 (05/08/2020, 12:00 AM).

Demographic distribution of cases

Of all notified cases, 51% are female and 49% are male. Among all those notified cases, for which data on age and gender were reported, 6,313 were children under 10 years of age (3.0%), 11,386 children and teenagers aged 10 to 19 years (5.4%), 94,848 persons aged 20 to 49 years (45%), 62,384 persons aged 50 to 69 years (29%), 31,154 persons aged 70 to 89 years (15%) and 5,476 persons aged 90 years and older (2.6%). The age and/or gender was unknown in 468 notified cases. Cases had a mean age of 47 years (median age 48 years). The highest incidences are seen in persons aged 90 years and older (Figure 3).

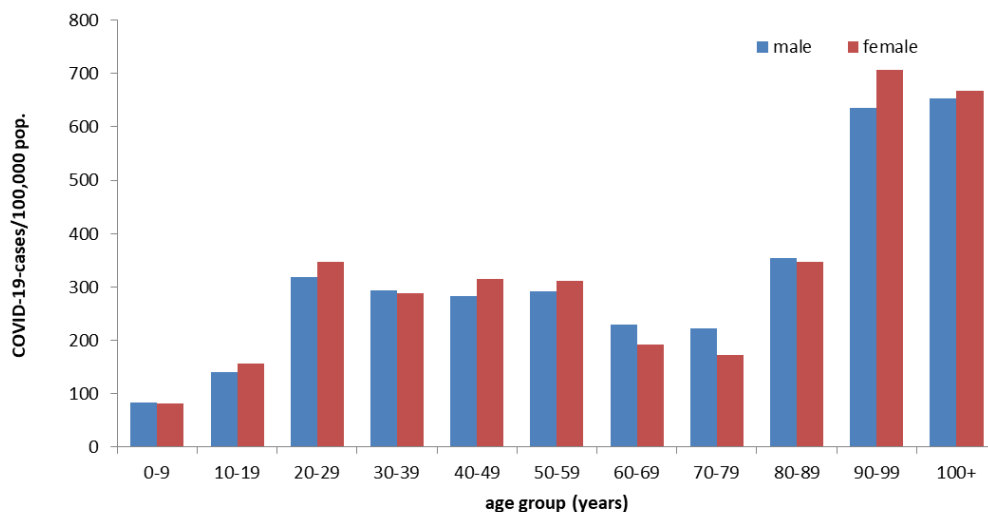


Figure 3: Electronically reported COVID-19 cases/100,000 population in Germany by age group and gender (n=211,632) for cases with information available (05/08/2020,12:00 AM).

Clinical aspects

Information on symptoms is available for 179,857 (85%) of the notified cases. Commonly reported symptoms were cough (47%), fever (40%) and rhinorrhoea (21%). Pneumonia was reported in 5,286 cases (3.0%). Since calendar week 17, cases are reported to the RKI as a distinct COVID-19 surveillance category. Since then, ageusia and anosmia can also be entered as symptoms. At least one of these two symptoms was reported in 5,360 of 35,757 cases (15%).

Note: The report is a snapshot and is continuously updated.

Hospitalisation was reported for 30,881 (17%) of 184,467 COVID-19 cases with information on hospitalisation status.

Approximately 194,600 people have recovered from their COVID-19 infection. Since the exact date of recovery is unknown in most cases, an algorithm was developed to estimate this number.

A total of 9,168 COVID-19-related deaths have been reported in Germany (4.3% of all confirmed cases). Of these, 5,073 (55%) are men and 4,090 (45%) are women (see Table 2), the gender was unknown in five cases.

The median age of COVID-19 cases reported to have died was 82 years. Of all deaths, 7,835 (85%) were in people aged 70 years or older, but only 17% of all cases were in this age group. Thus far, three deaths among COVID-19 cases under 20 years of age have been reported to the RKI. Pre-existing medical conditions were reported for all three.

Table 2: Number of notified COVID-19 deaths by age group and gender electronically reported to RKI (Data available for 9,163 of notified deaths; 05/08/2020, 12:00 AM)

Gender	Age group (in years)										
	0-9	10-19	20-29	30-39	40-49	50-59	60-69	70-79	80-89	90-99	100+
Male		2	6	17	57	240	655	1,390	2,126	574	6
Female	1		3	6	22	87	235	673	1,924	1,095	44
Total	1	2	9	23	79	327	890	2,063	4,050	1,669	50

Occupation, accommodation or care in facilities

In accordance with the Protection Against Infection Act, the RKI receives information on occupation, accommodation or care in a facility relevant for infection control for reported COVID-19 cases. Since information on occupation, accommodation or care in these facilities is missing in 25% of cases, the proportion of cases working, accommodated or cared for in these facilities reported here should be considered minimum values. Among the COVID-19 cases reported from the above mentioned facilities, the proportion of cases that actually acquired their infection in these facilities is unknown.

Table 3: Notified COVID-19-cases according to possible occupation, accommodation or care in facilities relevant for transmission of infectious diseases electronically reported to RKI (210,797* cases, no data available for 52,750 cases; 05/08/2020, 12:00 AM)

Facility according to		Total	Hospitalised	Deaths	Recovered (estimate)
§ 23 IfSG (e.g. hospitals, outpatient clinics and practices, dialysis clinics or outpatient nursing services)	Cared for / accommodated in facility	3,635	2,613	659	2,900
	Occupation in facility	14,474	659	23	14,300
§ 33 IfSG (e.g. day care facilities, kindergartens, facilities for after school care, schools or other educational facilities, children's homes, holiday camps)	Cared for / accommodated in facility*	4,315	87	1	3,900
	Occupation in facility	2,959	155	7	2,900
§ 36 IfSG (e.g. facilities for the care of older, disabled, or other persons in need of care, homeless shelters, community facilities for asylum-seekers, repatriates and refugees as well as other mass accommodation and prisons)	Cared for / accommodated in facility	18,689	4,197	3,628	14,800
	Occupation in facility	10,245	432	40	10,100
§ 42 IfSG (e.g. meat processing plants or kitchens in the catering trade, in inns, restaurants, canteens, cafés, or other establishments with or for communal catering)	Occupation in facility	5,124	221	5	4,900
Neither cared for, accommodated in nor working in a facility		98,606	16,786	3,511	91,600

*for care according to § 33 IfSG only cases under 18 years of age are taken into account, as other information may be assumed to be incorrect.
IfSG: Protection Against Infection Law

The number of COVID-19 cases was highest among persons cared for or employed in medical and other care facilities according to §23 and §36 IfSG (Table 3). The number of deaths was particularly high among persons cared for in these facilities.

Among the cases reported as working in medical facilities, 73% were female and 27% male. Their median age was 41 years. The high number of cases among people cared for or working in various care facilities (Section 36 IfSG) is consistent with numerous reported outbreaks, especially in nursing homes. The low number of cases among persons who attend or work in facilities providing child care or education (Section 33 IfSG) reflects the low incidence in children observed thus far. The increase in the number of cases among persons working in the food sector (§42) is largely due to outbreaks in meat processing plants.

Outbreaks

Four districts reported an increased incidence of >25 cases in 7 days/100.000 inhabitants: the districts of Dingolfing-Landau in Bavaria, district Offenbach in Hesse, and the districts Herne and Kleve in North Rhine-Westphalia.

A high 7-day incidence with more than 100 cases per 100,000 inhabitants was observed in the district of Dingolfing-Landau. The increase is due to two outbreaks with >390 COVID-19-cases, one among harvest workers of an agricultural company and the other among employees of a canning company. Quarantine was ordered for all employees of both companies. The local population (3,300 inhabitants) has been

offered voluntary testing. In the district of Offenburg the increase in case numbers is predominantly due to cases among returning travelers; this also explains a number of cases in Herne. In Kleve >60 cases were identified in conjunction with a large wedding celebration.

Further COVID-19 outbreaks continue to be reported in nursing homes and hospitals, refugee facilities, family events, child-day care facilities as well as religious communities.

Estimation of the reproduction number (R)

The presented case numbers do not fully reflect the temporal progression of incident COVID-19-cases, since the time intervals between actual onset of illness and diagnosis, reporting, as well as data transmission to the RKI vary greatly. Therefore, a nowcasting approach is applied to model the true temporal progression of COVID-19 cases according to illness onset. Figure 4 shows the result of this analysis.

The reproduction number, R, is defined as the mean number of people infected by one infected person. R can only be estimated based on statistical analyses such as nowcasting and not directly extracted from the notification system.

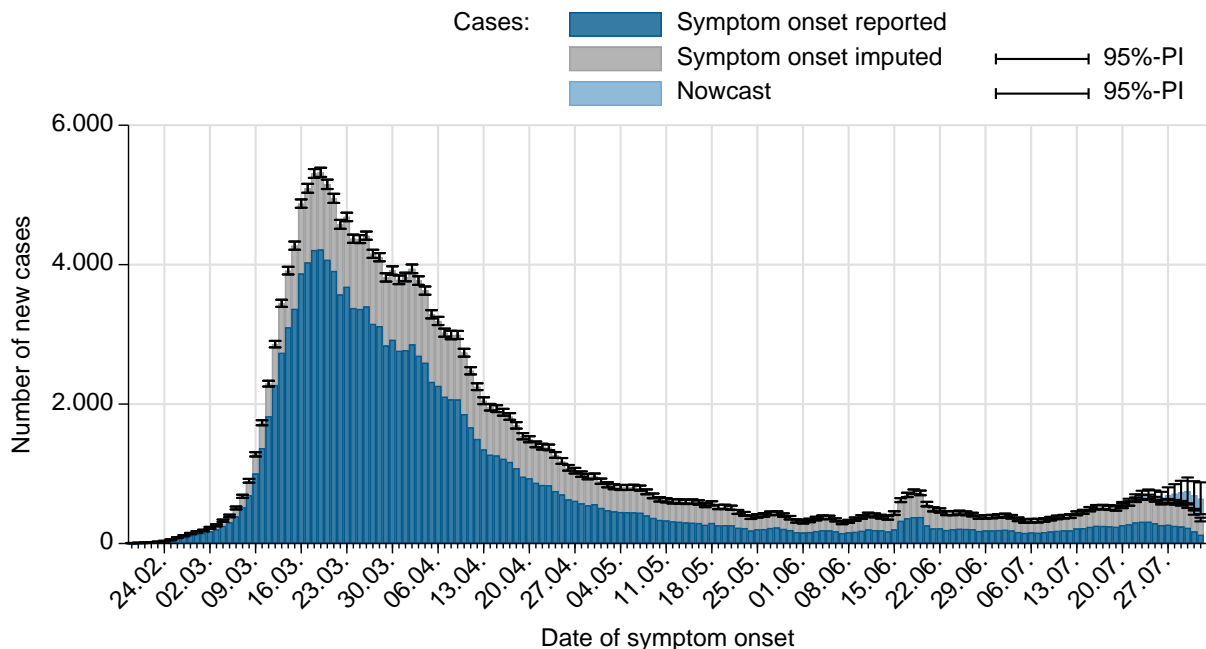


Figure 4: Number of notified COVID-19 cases with known date of illness onset (dark blue), estimated date of illness onset for cases without reported date of onset (grey) and estimated number of not yet notified cases according to illness onset electronically reported to RKI (light blue) (as of 05/08/2020, 12 AM, taking into account cases up to 01/08/2020).

A sensitive 4-day-R-value can be estimated by using a 4-day moving average of the number of new cases estimated by nowcasting. This 4-day value reflects the infection situation about one to two weeks ago. This value reacts sensitively to short-term changes in case numbers, such as those caused by individual outbreaks. Furthermore, outbreak dynamics may be influenced widespread testing performed among affected persons, leading to the rapid detection of many additional COVID-19 cases. This can lead to relatively large fluctuations in the estimated R-value, especially if the total number of new cases is small.

The current estimate of the 4-day R-value is **0.9** (95%-prediction interval: **0.71 – 1.05**) and is based on electronically notified cases as of 05/08/2020, 12:00 AM.

Similarly, the 7-day R-value is estimated by using a moving 7-day average of the nowcasting curve. This compensates for fluctuations more effectively, as this value represents a slightly later course of infection

of about one to a little over two weeks ago. The 7-day R-value is estimated at **0.97** (95% prediction interval: **0.86 – 1.05**) and is based on electronically notified cases as of 05/08/2020, 12:00 AM.

The reported 7-day R value has been around 1 or slightly above since mid-July 2020. This is due to a larger number of small outbreaks, but also case numbers in Germany overall, which have increased steadily in recent weeks since the relaxation of the measures.

See also the RKI's statement on high case numbers of 24/07/2020

https://www.rki.de/DE/Content/InfAZ/N/Neuartiges_Coronavirus/Gestiegene_Fallzahlen.html

Sample calculations as well as an excel sheet presenting both R-values with daily updates can be found under www.rki.de/covid-19-nowcasting. A detailed methodological explanation of the more stable 7day R-value is also available there. More general information and sample calculations for both R-values can also be found in our FAQs (<http://www.rki.de/covid-19-faq>).

A detailed description of the methodology is available at

https://www.rki.de/DE/Content/Infekt/EpidBull/Archiv/2020/17/Art_02.html (Epid. Bull. 17 | 2020 from 23/04/2020)

DIVI intensive care register

A registry of the German Interdisciplinary Association for Intensive and Emergency Medicine (DIVI), the RKI and the German Hospital Federation (DKG) was established to document intensive care capacity as well as the number of COVID-19 cases treated in participating hospitals (<https://www.intensivregister.de/#/intensivregister>). The DIVI intensive care register documents the number of available intensive care beds in the reporting hospitals on a daily basis. Since 16/04/2020, all hospitals with intensive care beds are required to report.

As of 05/08/2020, a total of **1,263** hospitals or departments reported to the DIVI registry. Overall, **30,388** intensive care beds were registered, of which **21,340** (70%) are occupied, and **9,048** (30%) are currently available. The number of COVID-19 cases treated in participating hospitals is shown in Table 4.

Table 4: COVID-19 patients requiring intensive care (ICU) recorded in the DIVI register (05/08/2020, 12:15 AM).

	Number of patients	Percentage	Change to previous day*
Currently in ICU	239		
- of these: mechanically ventilated	140	59%	
Discharged from ICU	15,813		
- of these: deaths	3,884	25%	

*Due to a new approach for the ascertainment and calculation of ICU capacities, it was not possible to provide the changes to the previous day on 04/08/2020 and 05/08/2020.

Surveys on SARS-CoV-2 laboratory tests in Germany

In order to assess the SARS-CoV-2 test numbers, data from university hospitals, research institutions as well as clinical and outpatient laboratories throughout Germany are merged weekly at the RKI. These are transmitted via an internet-based RKI test laboratory survey, via the network for respiratory viruses (RespVir), via the laboratory-based SARS-CoV-2 Surveillance established at the RKI (an extension of the Antibiotic Resistance Surveillance (ARS)) and via the enquiry of a professional association of laboratory medicine.

Since the beginning of testing in Germany up to and including week 31/2020, 8,586,648 laboratory tests have been recorded to date, 249,242 of which have tested positive for SARS-CoV-2.

Up to and including week 31, 235 laboratories have registered for the RKI test laboratory survey or in one of the other transmitting networks and communicate mainly on a weekly basis. Since laboratories can register the tests of the previous calendar weeks at a later date, it is possible that the numbers determined will increase subsequently. It should be noted that the number of tests is not the same as the number of persons tested, as the data may include multiple tests of patients (see Table 5).

Table 2: Number of SARS-CoV-2-laboratory tests in Germany (as of 04/08/2020)

weeks* 2020	Number tests	Tested positiv	Proportion positive (%)	Number of reporting laboratories
Up until week 11	124,716	3,892	3.1	90
week 11	127,457	7,582	5.9	114
week 12	348,619	23,820	6.8	152
week 13	361,515	31,414	8.7	151
week 14	408,348	36,885	9.0	154
week 15	380,197	30,791	8.1	164
week 16	331,902	22,082	6.7	168
week 17	363,890	18,083	5.0	178
week 18	326,788	12,608	3.9	175
week 19	403,875	10,755	2.7	182
week 20	432,666	7,233	1.7	183
week 21	353,467	5,218	1.5	179
week 22	405,269	4,310	1.1	178
week 23	340,986	3,208	0.9	176
week 24	326,645	2,816	0.9	172
week 25	387,484	5,309	1.4	175
week 26	467,004	3,674	0.8	180
week 27	505,518	3,080	0.6	150
week 28	509,298	2,989	0.6	177
week 29	537,334	3,480	0.6	173
week 30	569,868	4,462	0.8	176
week 31	573,802	5,551	1.0	161
Summe	8,586,648	249,242		

Risk Assessment by the RKI

General assessment

At the global and the national level, the situation is very dynamic and must be taken seriously. The number of cases continues to increase worldwide. The number of newly reported cases declined from mid-March until early July. Since then, case numbers have been steadily increasing. Some districts are transmitting very few or no cases to the RKI. However, individual outbreaks are increasingly occurring again, which can reach considerable proportions. Vaccines and anti-viral therapeutics are currently not available. The RKI currently assesses the risk to the health of the German population overall as high and as very high for risk groups. This assessment may change at short notice based on new insights.

Infection risk

SARS-CoV-2 can be transmitted easily from person to person. The risk of infection depends heavily on the regional spread, living conditions and also on individual behaviour (physical distancing, hygiene measures and community masks).

Disease severity

In most cases, the disease is mild. The probability of progression towards serious disease increases with increasing age and underlying illnesses. Individual long-term consequences cannot be estimated yet.

Burden on health system

The burden on the health care system depends largely on the geographical distribution of cases, health care capacity and initiation of containment measures (isolation, quarantine, physical distancing etc.). In large parts of Germany it is currently low, but it can rapidly increase locally and affect the public health system in particular as well as medical care facilities.

Measures taken in Germany

- Information from the Ministry of Health for travelers entering Germany: Frequently asked questions and answers (in German) <https://www.bundesgesundheitsministerium.de/coronavirus-infos-reisende/faq-tests-einreisende.html>
- Corona-Warn-App https://www.rki.de/DE/Content/InfAZ/N/Neuartiges_Coronavirus/WarnApp/Warn_App.html
- Regulations for persons entering Germany in connection with the novel coronavirus SARS-CoV-2 (15.06.2020) https://www.rki.de/DE/Content/InfAZ/N/Neuartiges_Coronavirus/Transport/BMG_Merkblatt_Reisende_Tab.html
- Information on additional regulations at the regional level regarding control measures such as physical distancing or quarantine regulations for persons entering from other countries can be accessed here: <https://www.bundesregierung.de/breg-de/themen/coronavirus/corona-bundeslaender-1745198> (in German)
- (Non-medical) face masks must be worn on public transport and in shops in all federal states.
- Data on current disease activity can be found in the daily situation reports and on the RKI dashboard: <https://corona.rki.de/>
- A distance of 1.5 metres to other individuals must be maintained in public spaces: <https://www.bundesregierung.de/breg-de/themen/coronavirus/besprechung-der-bundeskanzlerin-mit-den-regierungschefinnen-und-regierungschefs-der-laender-1733248> (in German)

Note: The report is a snapshot and is continuously updated.