



Coronavirus Disease 2019 (COVID-19) Daily Situation Report of the Robert Koch Institute

25/03/2020

Coronavirus Disease 2019
(COVID-19)

Germany

Confirmed cases

31,554
(+4,118*)

Deaths

149
(+35*)

Deaths (%)

0.5%

– Changes since the last report are marked *blue* in the text –
previous day

*Change from

Summary

National (as of 25/03/2020, 12:00 AM)

- As of March 23/2020, gatherings of more than 2 persons (with the exception of families and household members) were banned in all states. Restaurants and businesses concerned with body care were closed.
- All federal states implemented extensive measures to enforce social distancing as well as school and daycare closures or suspension of compulsory school attendance from the week of 16/03/2020.
- In total, **31,554** COVID-19 cases and **149** deaths due to COVID-19 have been electronically reported in Germany.
- All 16 federal states are affected. The incidence of COVID-19 is highest in Hamburg, Baden-Württemberg, Bavaria and Northrhine-Wesphalia.
- Most cases are between 35 and 59 years old; men are more affected than woman.
- As of March 16, Germany closed its borders with Austria, Denmark, France, Luxembourg and Switzerland.
- **As of March 25, the province of Hubei in China is no longer classified as an international risk area.**

Epidemiological Situation in Germany

Epidemiological analyses are based on validated cases notified electronically to RKI according to the Protection Against Infection Law (Data closure: 00 AM, each day).

Since 27/01/2020, a total of **31,554 (+4,118)** laboratory-confirmed cases of coronavirus disease 2019 (COVID-19) have been electronically reported to and validated at the RKI, including **149** deaths. (see Table 1 and Figure 1). In addition, diagnosis is ongoing for suspected cases in several federal states. Information on confirmed cases are also available on the RKI website at https://www.rki.de/DE/Content/InfAZ/N/Neuartiges_Coronavirus/Fallzahlen.html and <https://corona.rki.de>

Table 1: Distribution of the laboratory-confirmed COVID-19-cases per federal state in Germany (25/03/2020, 12:00 AM)

Federal State	Electronically submitted cases		
	Number	cases/100,000 pop.	Number of deaths
Baden-Württemberg	6,069	55	37
Bavaria	6,558	50	37
Berlin	1,428	38	2
Brandenburg	429	17	1
Bremen	200	29	
Hamburg	1,262	69	
Hesse	1,754	28	4
Mecklenburg-Western Pomerania	218	14	
Lower Saxony	2,140	27	7
North Rhine-Westphalia	7,197	40	43
Rhineland-Palatinate	1,591	39	5
Saarland	403	41	2
Saxony	959	24	6
Saxony-Anhalt	375	17	1
Schleswig-Holstein	577	20	3
Thuringia	394	18	1
Total	31,554	38	149

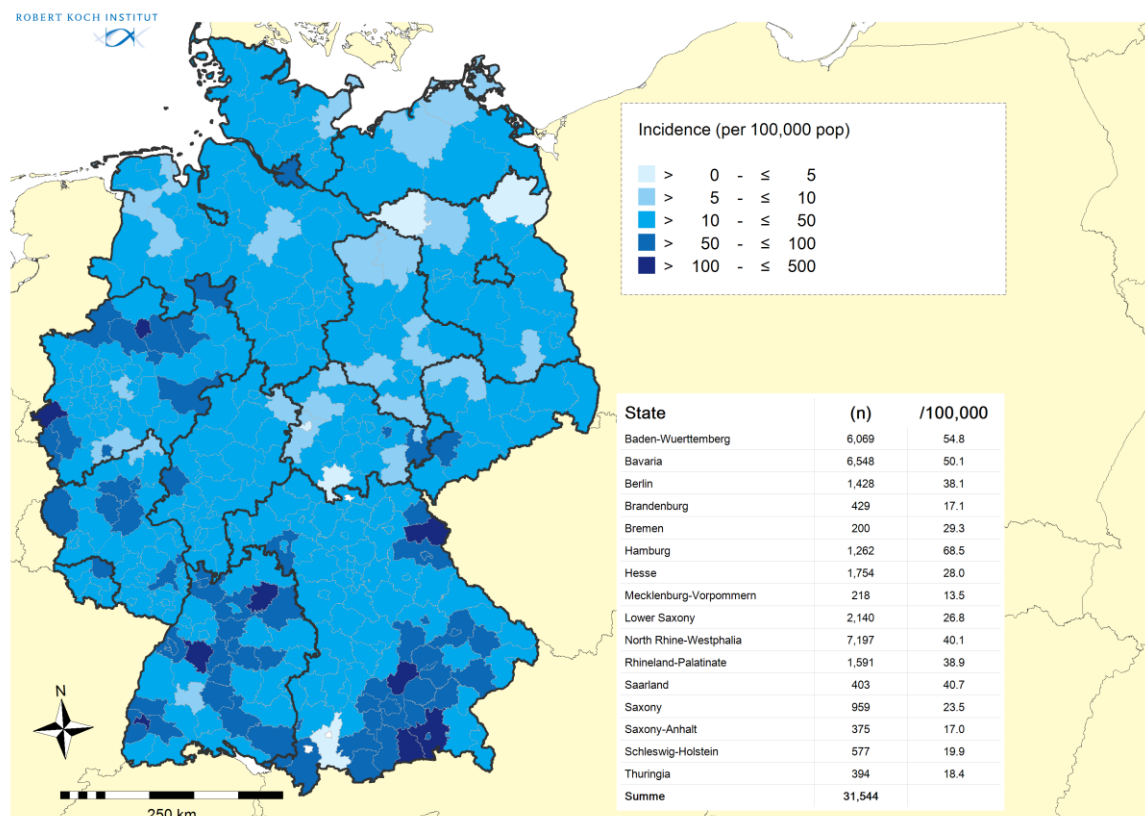


Figure 1: Distribution of the 31,554 electronically reported COVID-19-cases in Germany by county and state (25/03/2020, 12:00 AM). Please see the COVID dashboard (<https://corona.rki.de/>) for information on number of cases by local health authority.

Among these cases, 17,303 are male (55%) and 14,134 female (45%). In total, 234 children under the age of 5, 651 children aged 5 to 14 years, 24,408 persons aged 15 to 59 years and 6,129 persons 60 years and older (see Figure 2). The age of 133 notified cases is unknown. The median age is 47 years.

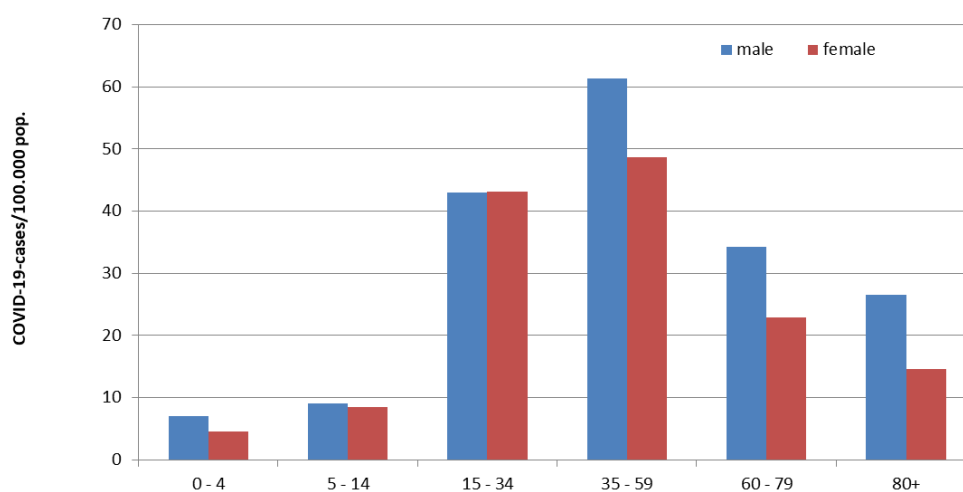


Figure 2: Electronically reported COVID-19-cases/100,000 population in Germany by age group and sex (n=31,325) cases with data available; 25/03/2020, 12:00 AM)

Known dates of symptom onset ranged from 23/01/2020 through 24/03/2020. In 13,449 cases, onset of symptoms is unknown and therefore date of reporting is shown (see Figure 3).

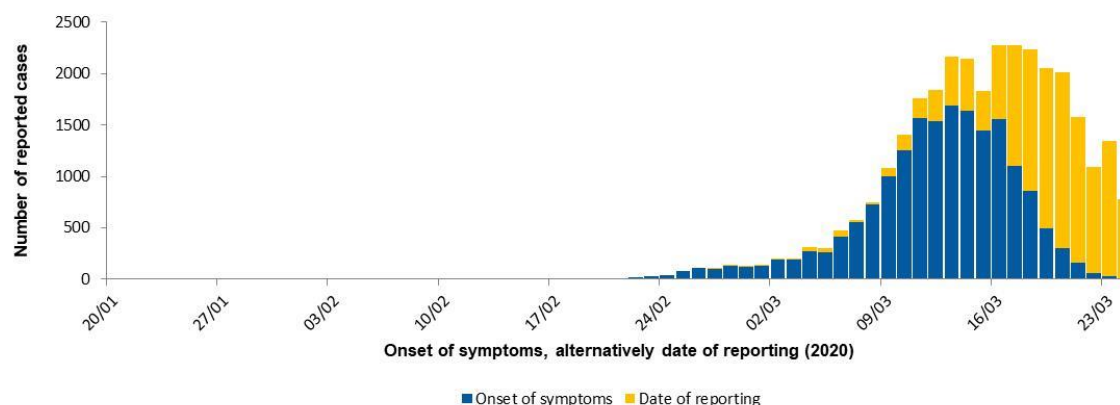


Figure 3: Epidemiological curve of the electronically reported COVID-19-cases in Germany since 20/01/2020 by onset of symptoms and alternatively by date of reporting. (25/03/2020, 12:00 AM)

Further information

The 149 COVID-19-related deaths reported in Germany since 09/03/2020 concerned 97 men and 52 women. The median age was 83 years and the range 42 to 100 years. Of all deaths, 101 (68%) were in persons 80 years or older (but only 3% of all cases).

Assessment by the RKI

At the global and the national level, the situation is very dynamic and must be taken seriously. Severe and fatal courses occur in some cases. The number of cases in Germany continues to increase. The RKI currently assesses the overall risk to the health of the German population as high. However, this risk varies from region to region. The probability of serious disease progression increases with increasing age and existing previous illnesses. The burden on the health care system depends on the regional distribution of cases, health care capacity and initiation of containment measures (isolation, quarantine, social distancing etc.), and may be very high in some regions. This assessment may change on short notice as a result of new findings.

Measures taken by Germany

Risk areas and particularly affected areas in Germany

- The following regions are classified as particularly affected areas in Germany:
 - o District of Heinsberg (North Rhine Westphalia) since 12/03/2020
- All federal states are implementing measures to enforce social distancing, such as cancellation of mass gatherings, closure of cultural institutions such as museums, theaters, concert halls, limiting operation of restaurants, bars and clubs, as well as school and daycare closures starting the week of 16/03/2020.
- Bavaria and the Saarland have decreed a limited curfew.

- As of 12/03/2020, the following regions are classified as risk areas (https://www.rki.de/DE/Content/InfAZ/N/Neuartiges_Coronavirus/Risikogebiete.html):
 - o In Austria: Tyrol
 - o Egypt
 - o Iran
 - o Italy
 - o In South Korea: The province of Gyeongsangbuk-do (North-Gyeongsang)
 - o In Spain: Madrid, [the provinces Navarra and La Rioja and the Basque Country \(Pais Vasco\)](#)
 - o [In Switzerland: the cantons of Tessin, Waadt and Geneva](#)
 - o In France: Region Grand Est (this region includes Alsace, Lorraine and Champagne-Ardenne)
 - o In the United States: The states of California, Washington and New York

[The province of Hubei in China is no longer classified as an international risk area.](#)

Other measures

- As of March 23/2020, gatherings of more than 2 persons (with the exception of families and household members) are banned in all states. Restaurants and businesses concerned with body care were closed. In public spaces, all persons must maintain a distance of 1.5 metres to other individuals
<https://www.bundesregierung.de/breg-de/themen/coronavirus/besprechung-der-bundestkanzlerin-mit-den-regierungschefinnen-und-regierungschefs-der-laender-1733248>
- As of March 16/2020, the Federal Government has temporarily restricted cross-border traffic from France, Austria, Luxembourg, Switzerland and Denmark.
- On March 18, 2020, the Federal Government of Germany implemented entry restrictions for non-EU citizens to Germany. Citizens of EU countries and Great Britain, Iceland, Liechtenstein, Norway and Switzerland are permitted to travel through Germany.