



# Coronavirus Disease 2019 (COVID-19)

## Daily Situation Report of the Robert Koch Institute

24/03/2020

Coronavirus Disease 2019  
(COVID-19)

**Germany**

Confirmed cases

**27,436**  
(+4.764\*)

Deaths

**114**  
(+28\*)

Deaths (%)

**0.4%**

– Changes since the last report are marked *blue* in the text –  
previous day

\*Change from

### Summary

**National** (as of 24/03/2020, 12:00 AM)

- As of March 23/2020, gatherings of more than 2 persons (with the exception of families and household members) were banned in all states. Restaurants and businesses concerned with body care were closed.
- All federal states implemented extensive measures to enforce social distancing as well as school and daycare closures or suspension of compulsory school attendance from the week of 16/03/2020.
- In total, **27,436** COVID-19 cases and **114** deaths due to COVID-19 have been electronically reported in Germany.
- All 16 federal states are affected. The incidence of COVID-19 is highest in Hamburg, Baden-Württemberg, Bavaria and Northrhine-Wesphalia.
- Most cases are between 35 and 59 years old; men are more affected than woman.
- As of March 16, Germany closed its borders with Austria, Denmark, France, Luxembourg and Switzerland.

## Epidemiological Situation in Germany

Epidemiological analyses are based on validated cases notified electronically to RKI according to the Protection Against Infection Law (Data closure: 00 AM, each day).

Since 27/01/2020, a total of **27,436 (+4,764)** laboratory-confirmed cases of coronavirus disease 2019 (COVID-19) have been electronically reported to and validated at the RKI, including **114** deaths. (see Table 1 and Figure 1). In addition, diagnosis is ongoing for suspected cases in several federal states. Information on confirmed cases are also available on the RKI website at [https://www.rki.de/DE/Content/InfAZ/N/Neuartiges\\_Coronavirus/Fallzahlen.html](https://www.rki.de/DE/Content/InfAZ/N/Neuartiges_Coronavirus/Fallzahlen.html) and <https://corona.rki.de>

Table 1: Distribution of the laboratory-confirmed COVID-19-cases per federal state in Germany (24/03/2020, 12:00 AM)

Federal State	Electronically submitted cases			Number of deaths
	Number	Difference	cases/100,000 pop.	
Baden-Württemberg	5,348	1,537	48	30
Bavaria	5,754	862	44	30
Berlin	1,220	143	33	1
Brandenburg	343	55	14	
Bremen	183	13	27	
Hamburg	1,043	100	57	
Hesse	1,620	273	26	4
Mecklenburg-Western Pomerania	199	27	12	
Lower Saxony	1,764	281	22	6
North Rhine-Westphalia	6,318	703	35	33
Rhineland-Palatinate	1,370	193	34	5
Saarland	337	137	34	1
Saxony	811	158	20	1
Saxony-Anhalt	321	109	15	
Schleswig-Holstein	478	95	17	2
Thuringia	327	78	15	1
<b>Total</b>	<b>27,436</b>	<b>4,764</b>	<b>33</b>	<b>114</b>

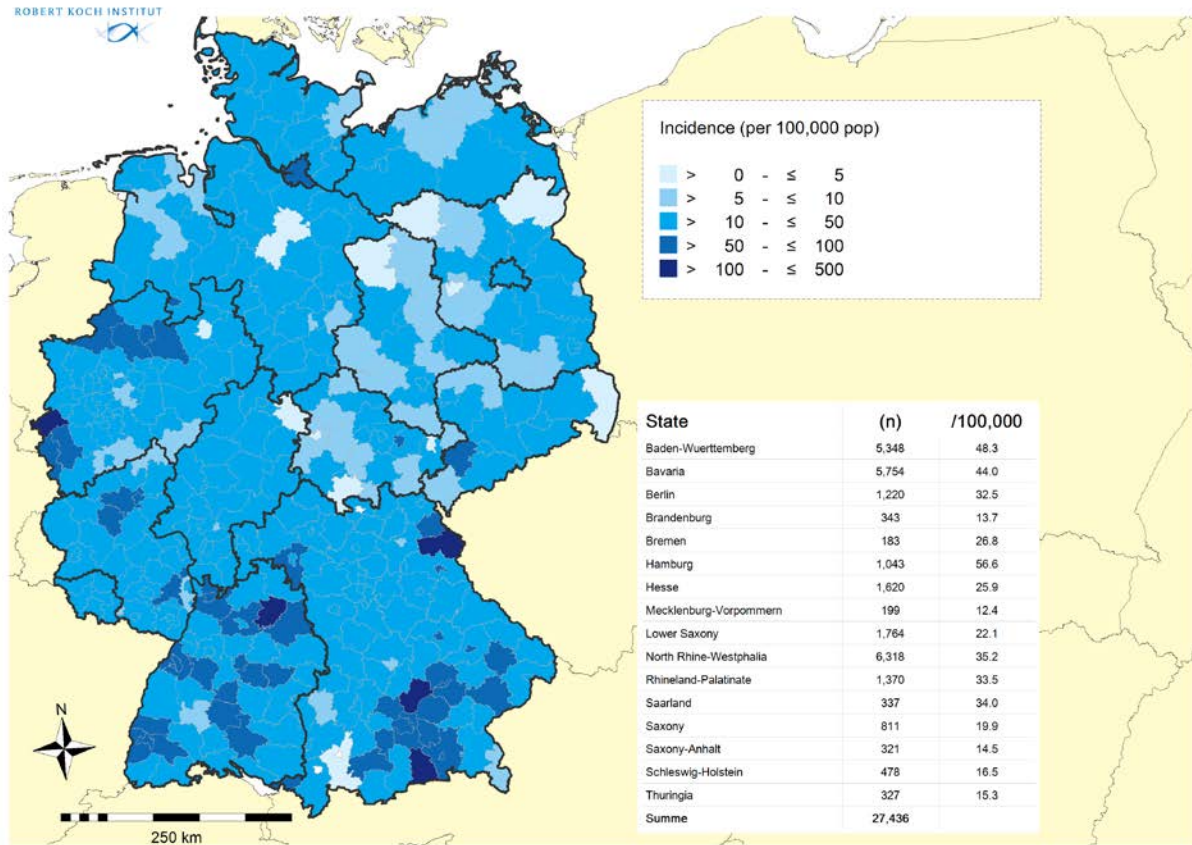


Figure 1: Distribution of the 27,436 electronically reported COVID-19-cases in Germany by county and state (24/03/2020, 12:00 AM). Please see the COVID dashboard (<https://corona.rki.de/>) for information on number of cases by local health authority.

Among these cases, 15,122 are male (55%) and 12,222 female (45%). In total, 202 children under the age of 5, 570 children aged 5 to 14 years, 21,373 persons aged 15 to 59 years and 5,165 persons 60 years and older (see Figure 2). The age of 126 notified cases is unknown. The median age is 47 years.

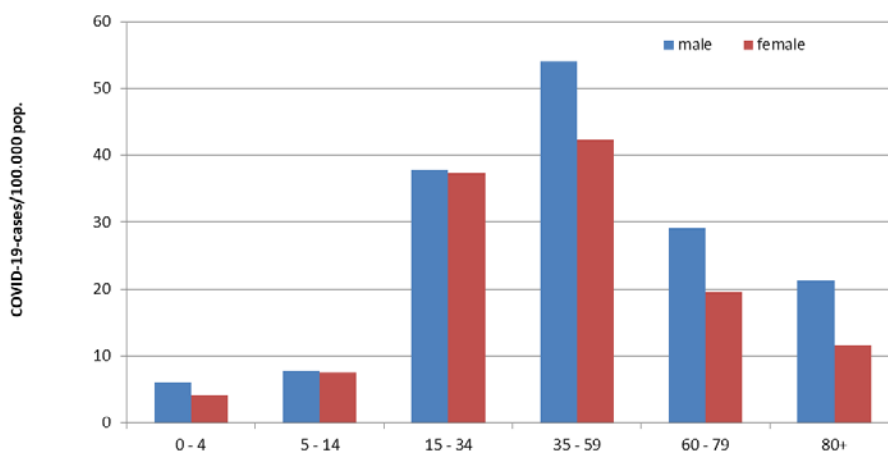


Figure 2: Electronically reported COVID-19-cases/100,000 population in Germany by age group and sex (n=27,236) cases with data available; 24/03/2020, 12:00 AM)

Known dates of symptom onset ranged from 23/01/2020 through 23/03/2020. In 12,139 cases, onset of symptoms is unknown and therefore date of reporting is shown (see Figure 3).

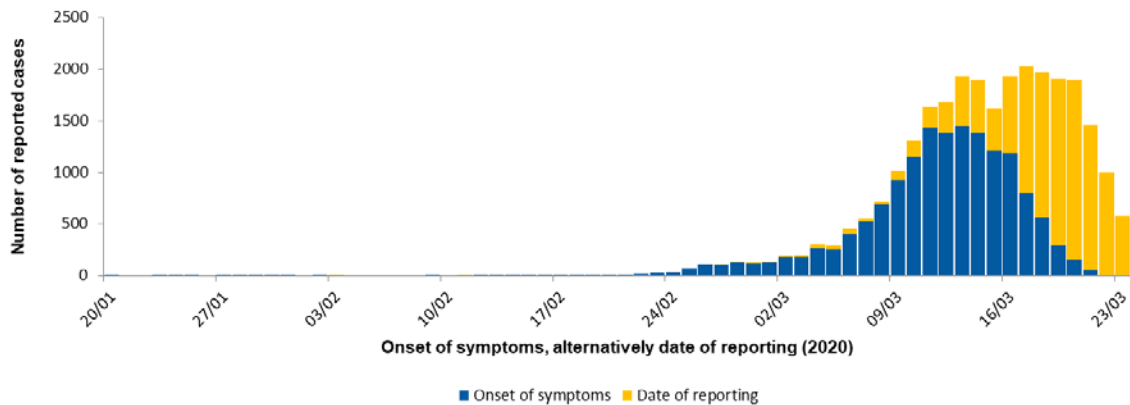


Figure 3: Epidemiological curve of the electronically reported COVID-19-cases in Germany since 20/01/2020 by onset of symptoms and alternatively by date of reporting. (24/03/2020, 12:00 AM)

#### Further information

The 114 COVID-19-related deaths reported in Germany since 09/03/2020 concerned 72 men and 42 women. Median age was 83 years; 79 deaths (69%) were in persons 80 years of older (but only 3% of all cases).

## Assessment by the RKI

At the global and the national level, the situation is very dynamic and must be taken seriously. Severe and fatal courses occur in some cases. The number of cases in Germany continues to increase. The RKI currently assesses the overall risk to the health of the German population as high. However, this risk varies from region to region. The probability of serious disease progression increases with increasing age and existing previous illnesses. The burden on the health care system depends on the regional distribution of cases, health care capacity and initiation of containment measures (isolation, quarantine, social distancing etc.), and may be very high in some regions. This assessment may change on short notice as a result of new findings.

## Measures taken by Germany

### Risk areas and particularly affected areas in Germany

- The following regions are classified as particularly affected areas in Germany:
  - o District of Heinsberg (North Rhine Westphalia) since 12/03/2020
- All federal states are implementing measures to enforce social distancing, such as cancellation of mass gatherings, closure of cultural institutions such as museums, theaters, concert halls, limiting operation of restaurants, bars and clubs, as well as school and daycare closures starting the week of 16/03/2020.
- Bavaria and the Saarland have decreed a limited curfew.

- As of 12/03/2020, the following regions are classified as risk areas ([www.rki.de/covid-19-risikogebiete](http://www.rki.de/covid-19-risikogebiete)):
  - o In Austria: Tyrol
  - o In China: Hubei province (incl. City of Wuhan)
  - o Egypt
  - o Iran
  - o Italy
  - o In South Korea: The province of Gyeongsangbuk-do (North-Gyeongsang)
  - o In Spain: Madrid
  - o In France: Region Grand Est (this region includes Alsace, Lorraine and Champagne-Ardenne)
  - o In the United States: The states of California, Washington and New York

### Other measures

- As of March 23/2020, gatherings of more than 2 persons (with the exception of families and household members) are banned in all states. Restaurants and businesses concerned with body care were closed. In public spaces, all persons must maintain a distance of 1.5 metres to other individuals  
<https://www.bundesregierung.de/breg-de/themen/coronavirus/besprechung-der-bundeskanzlerin-mit-den-regierungschefinnen-und-regierungschefs-der-laender-1733248>
- As of March 16/2020, the Federal Government has temporarily restricted cross-border traffic from France, Austria, Luxembourg, Switzerland and Denmark.
- On March 18, 2020, the Federal Government of Germany implemented entry restrictions for non-EU citizens to Germany. Citizens of EU countries and Great Britain, Iceland, Liechtenstein, Norway and Switzerland are permitted to travel through Germany.