



Coronavirus Disease 2019 (COVID-19)

Daily Situation Report of the Robert Koch Institute

21/03/2020

Coronavirus Disease 2019
(COVID-19)

– Changes since the last report
are marked *blue* in the text –

Germany

Confirmed cases

16,662
(+2,705*)

Deaths

47
(+16*)

Deaths (%)

0.3%

*Change from previous day

Summary

National (as of 21/03/2020. 12:00 AM)

- As of March 17, the situation report will only report on laboratory-confirmed COVID-19 cases electronically transmitted to the RKI.
- The risk assessment of COVID-19 by the Robert Koch Institute was changed to “high”.
- In total, **16,662** COVID-19 cases and **47** deaths due to COVID-19 have been electronically reported in Germany.
- All 16 federal states are affected. In relation to population numbers, most cases have been notified from Baden-Württemberg, Hamburg, Bavaria, Berlin and Rhineland Palatinate.
- Most cases are between 35 and 59 years old; men are more affected than woman.
- All federal states have implemented extensive measures to enforce social distancing as well as school and daycare closures or suspension of compulsory school attendance from the week of 16/03/2020. Bavaria **and the Saarland** will enforce a limited curfew.
- As of March 16, Germany closed its borders with Austria, Denmark, France, Luxembourg and Switzerland.

Epidemiological Situation in Germany

Epidemiological analyses are based on validated cases notified electronically to RKI according to the Protection Against Infection Law (Data closure: 00 AM, each day)

Since 27/01/2020, a total of **16,662 (+2,705)** laboratory-confirmed cases of coronavirus disease 2019 (COVID-19) have been electronically reported to and validated at the RKI, including **47** deaths. (See Table 1 and Figure 1). In addition, diagnosis is ongoing for suspected cases in several federal states. Information on confirmed cases are also available on the RKI website at https://www.rki.de/DE/Content/InfAZ/N/Neuartiges_Coronavirus/Fallzahlen.html and <https://corona.rki.de>

Table 1: Distribution of the laboratory-confirmed COVID-19-cases per federal state in Germany (21/03/2020, 12:00 AM)

Federal State	Electronically submitted cases			
	Number	Difference	cases/100,000 pop.	Number of deaths
Baden-Württemberg	3,668	+ 922	33	16
Bavaria	2,960	+ 559	23	19
Berlin	866	+ 135	23	1
Brandenburg	254	+ 62	10	
Bremen	142	+ 21	21	
Hamburg	587	+ 1	32	
Hesse	1,080	+ 267	17	2
Mecklenburg-Western Pomerania	165	+ 34	10	
Lower Saxony	1,023	+ 220	13	
North Rhine-Westphalia	3,542	+ 45	20	6
Rhineland-Palatinate	938	+ 137	23	1
Saarland	187	+ 41	19	
Saxony	567	+ 173	14	
Saxony-Anhalt	188	+ 8	9	1 ⁺
Schleswig-Holstein	308	+ 42	11	1
Thuringia	187	+ 38	9	
Total	16,662	+ 2,705	20	47

⁺ correction with next update

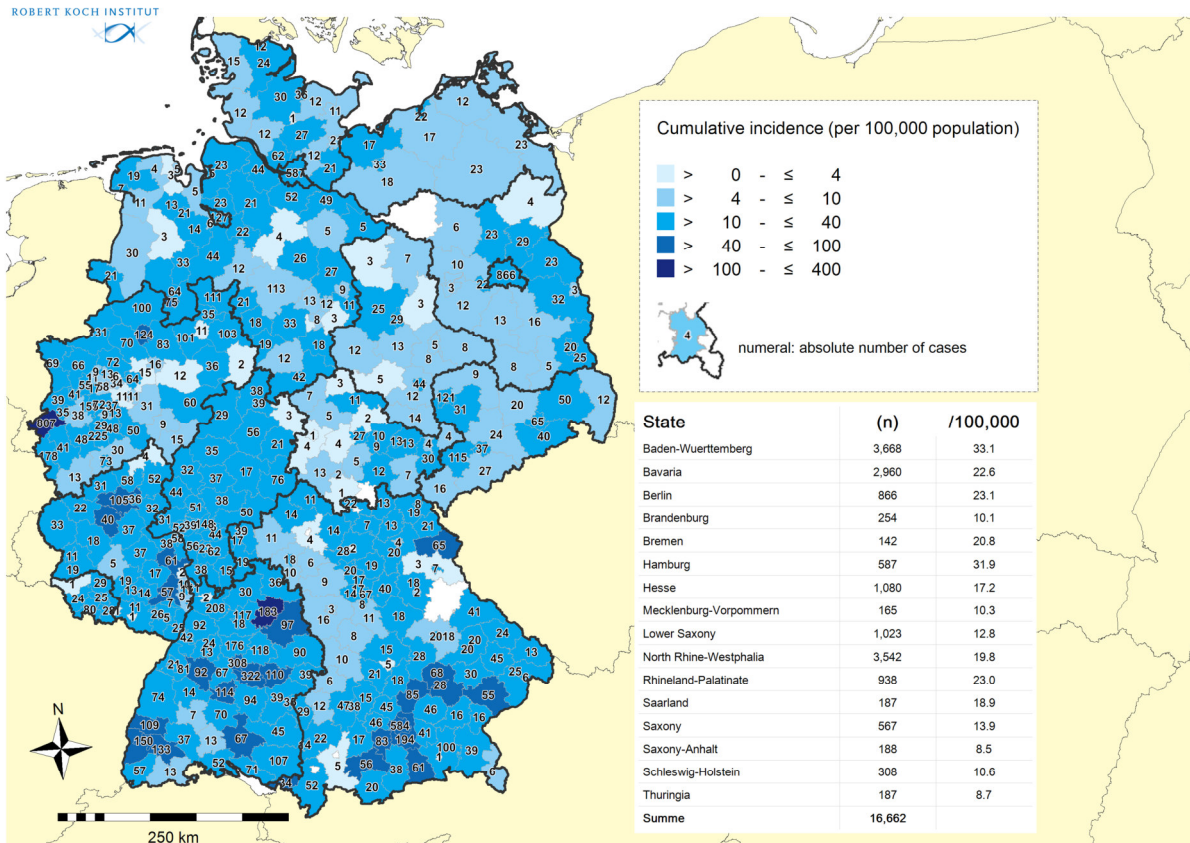


Figure 1: Distribution of the 16,662 electronically reported COVID-19-cases in Germany by county and state (21/03/2020, 12:00 AM)

Among these cases, 9,381 are male (56%) and 7,222 female (43%). In total, 123 children under the age of 5, 377 children aged 5 to 14 years, 13,220 persons aged 15 to 59 years and 2,854 persons 60 years and older (see Figure 2). The age of 90 notified cases is unknown. The median age is 47 years.

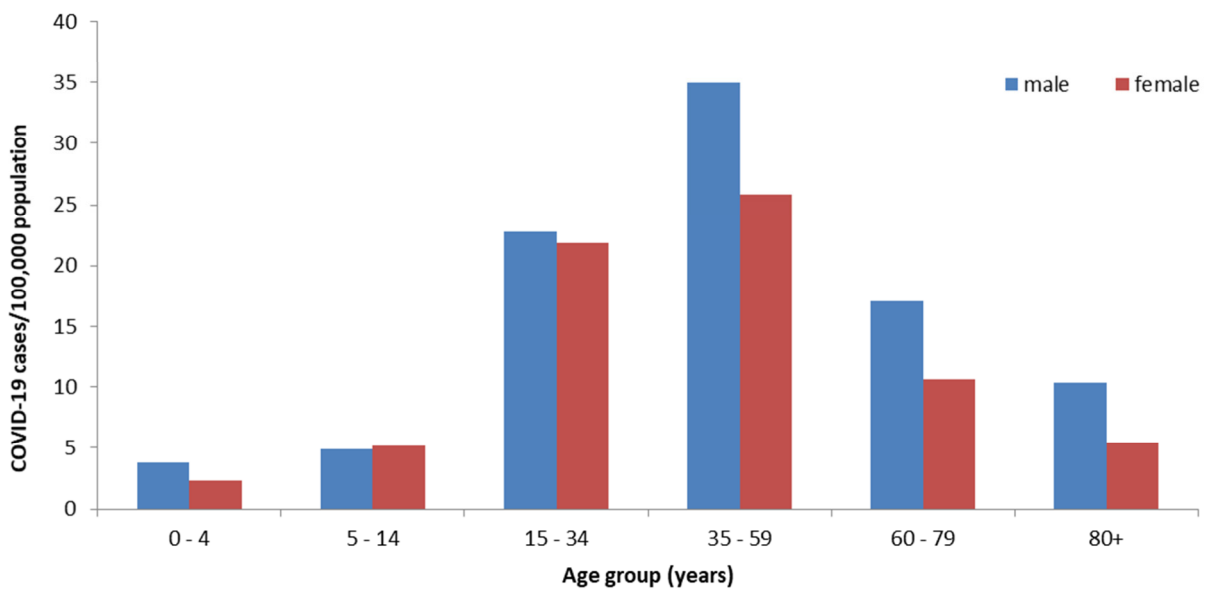


Figure 2: Electronically reported COVID-19-cases/100,000 population in Germany by age group and sex (n=16,533 cases with data available; 21/03/2020, 12:00 AM)

Note: The report is a snapshot and is continuously updated.

Known dates of symptom onset ranged from 23/01/2020 through 20/03/2020. In 7,311 cases, onset of symptoms is unknown and therefore date of reporting is shown (see Figure 3).

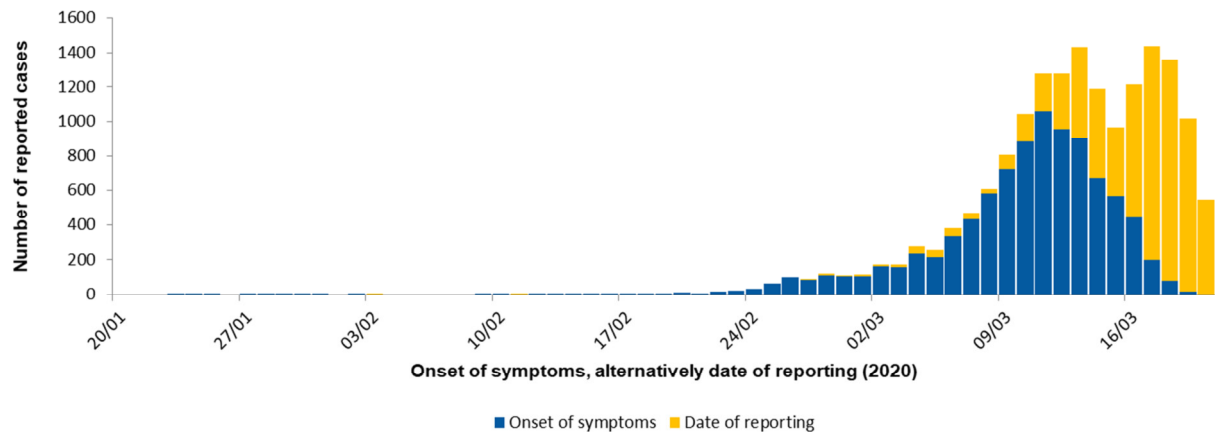


Figure 3: Epidemiological curve of the electronically reported COVID-19-cases in Germany since 20/01/2020 by onset of symptoms and alternatively by date of reporting. (21/03/2020, 12:00 AM)

Further information

The 47 COVID-19-related deaths reported in Germany since 09/03/2020 concerned 29 men and 18 women. Median age was 83 years.

Assessment by the RKI

At the global and the national level, the situation is very dynamic and must be taken seriously. Severe and fatal courses occur in some cases. The number of cases in Germany continues to increase. The RKI currently assesses the overall risk to the health of the German population as high. However, this risk varies from region to region. The probability of serious disease progression increases with increasing age and existing previous illnesses. The burden on the health care system depends on the regional distribution of cases, health care capacity and initiation of containment measures (isolation, quarantine, social distancing etc.), and may be very high in some regions. This assessment may change on short notice as a result of new findings.

Measures taken by Germany

Risk areas and particularly affected areas in Germany

- The following regions are classified as particularly affected areas in Germany:
 - o District of Heinsberg (North Rhine Westphalia) since 12/03/2020
- All federal states are implementing measures to enforce social distancing, such as cancellation of mass gatherings, closure of cultural institutions such as museums, theaters, concert halls, limiting operation of restaurants, bars and clubs, as well as school and daycare closures starting the week of 16/03/2020.
- Bavaria and the Saarland have decreed a limited curfew.

- As of 12/03/2020, the following regions are classified as risk areas (www.rki.de/covid-19-risikogebiete):
 - o In Austria: Tyrol
 - o In China: Hubei province (incl. City of Wuhan)
 - o **Egypt**
 - o Iran
 - o Italy
 - o In South Korea: The province of Gyeongsangbuk-do (North-Gyeongsang)
 - o In Spain: Madrid
 - o In France: Region Grand Est (this region includes Alsace, Lorraine and Champagne-Ardenne)
 - o In the United States: The states of California, Washington and New York

Other measures

- As of March 16/2020, the Federal Government has temporarily restricted cross-border traffic from France, Austria, Luxembourg, Switzerland and Denmark.
- On March 18, 2020, the Federal Government of Germany has decided to implement the entry restrictions for non-EU citizens to Germany. Citizens of EU countries and Great Britain, Iceland, Liechtenstein, Norway and Switzerland are permitted to travel through Germany.